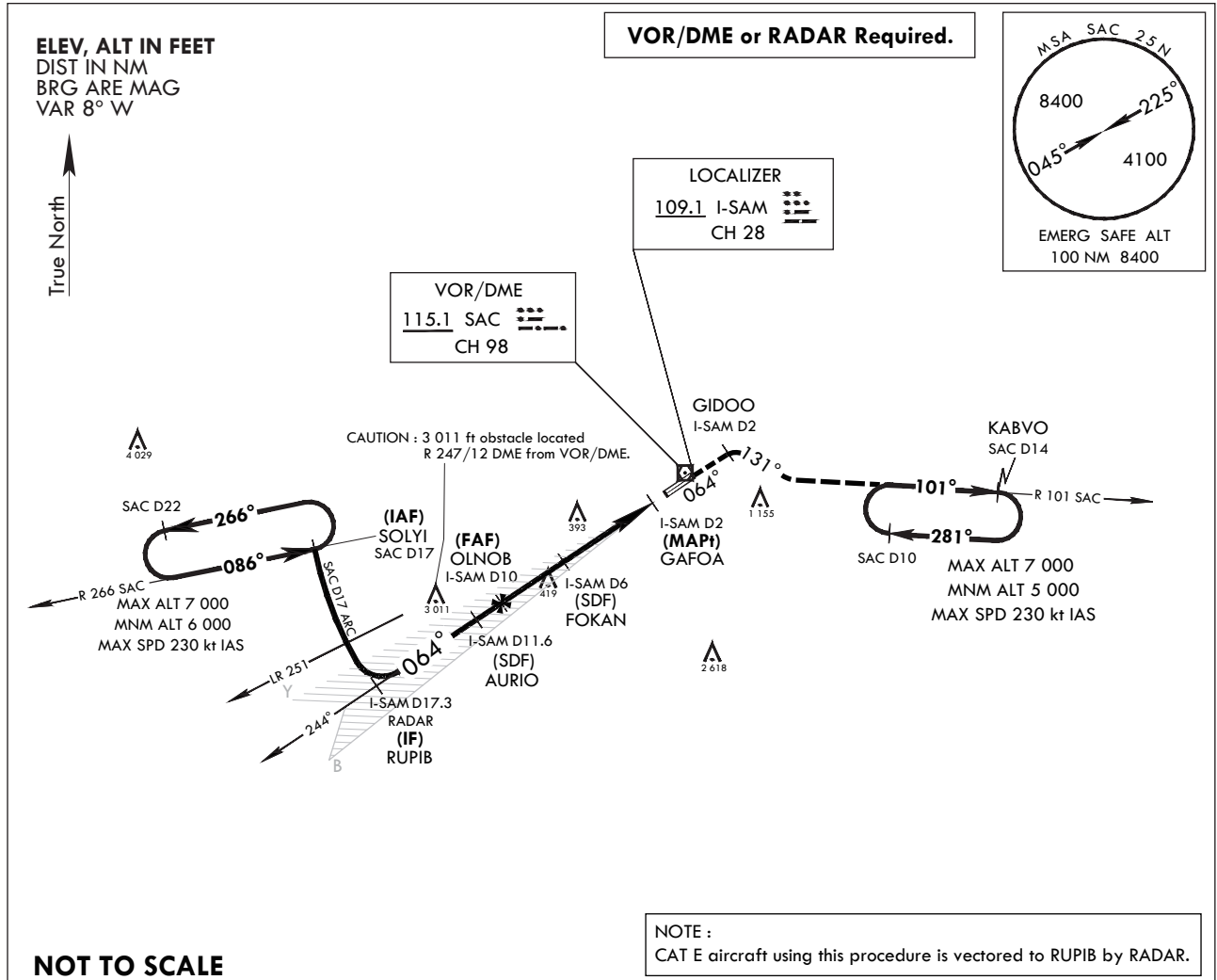


INSTRUMENT APPROACH CHART

AERODROME ELEV 25 ft
HEIGHTS RELATED TO THR RWY 06L - ELEV 15 ft
HIGHEST ELEV TDZ 17 ft

SACHEON APP 135.4 344.7
SACHEON TWR 118.675 236.6
305.4

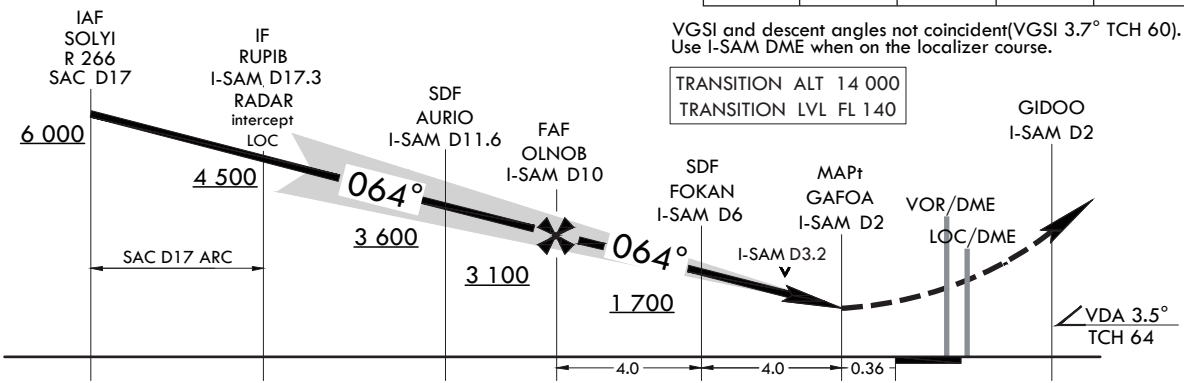
SACHEON/Sacheon(RKPS) LOC RWY 06L



NOT TO SCALE

NOTE :
CAT E aircraft using this procedure is vectored to RUPIB by RADAR.

MISSED APPROACH : Climb to 5 000 ft via HDG 064° to GIDOO, then right turn HDG 131° to intercept R 101 SAC and track on R 101 SAC to KABVO and hold, continue climb-in-hold to 5 000 ft, or as directed by ATC.



CATEGORY	A	B	C	D	E
S-LOC 06L *	700/40	683(700-¾)	700-1½		683(700-1½)
C CIRCLING **	800-1 775(800-1)	900-1¼ 875(900-1¼)	1 000-3	975(1 000-3)	1 120-3 1 095(1 100-3)

* When ALS INOP, increase CAT AB RVR to 55 and VIS to 1 mile, CAT CDE VIS to 2 miles.
** Circling is not authorized SE of RWY 06/24.

Change : Information of procedure name(LOC/DME → LOC) and RUPIB(I-SAM D17 → D17.3).

INTENTIONALLY

LEFT

BLANK

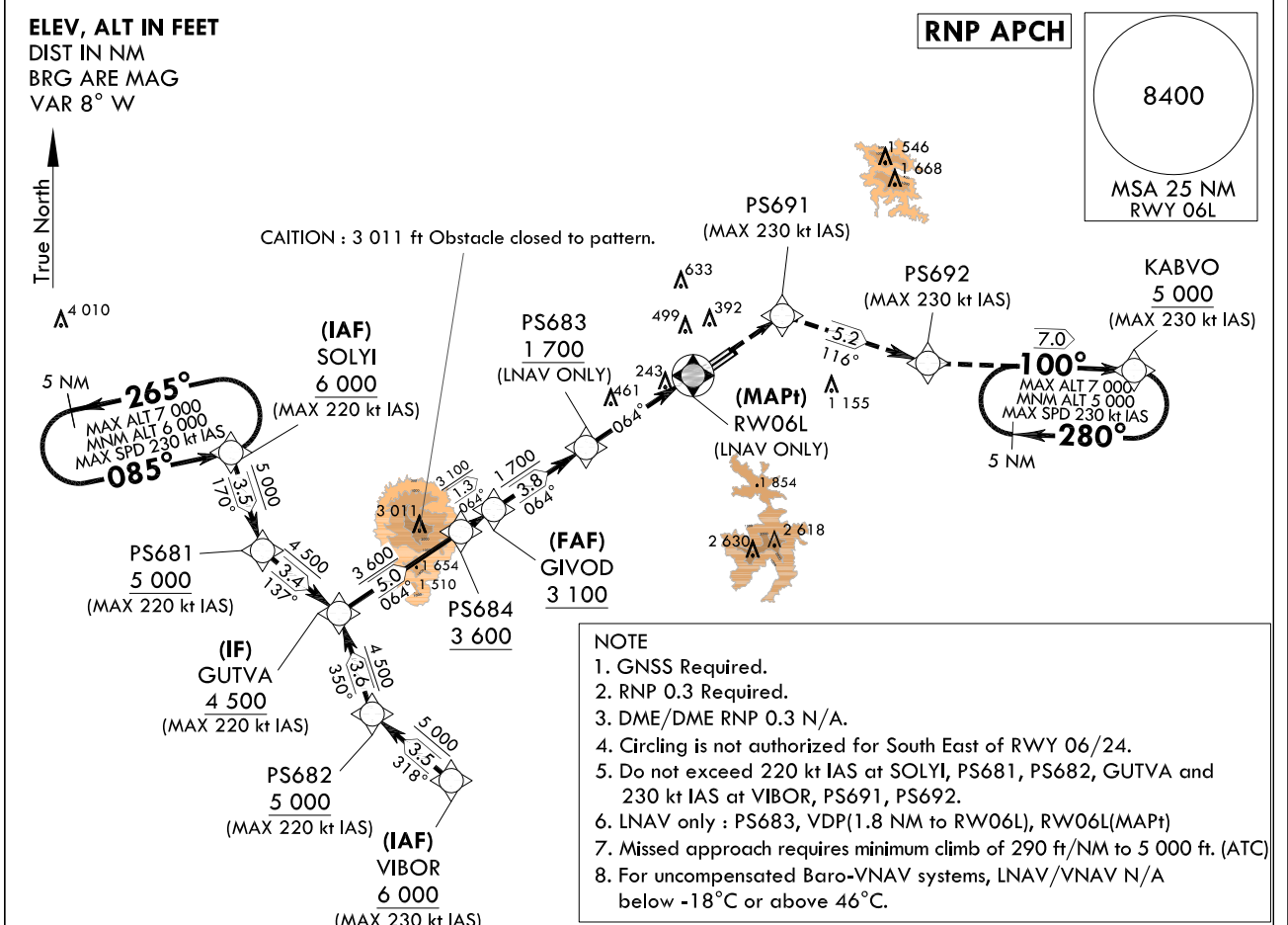
**INSTRUMENT
APPROACH
CHART**

AERODROME ELEV 25 ft
HEIGHTS RELATED TO
THR RWY 06L - ELEV 15 ft
HIGHEST ELEV TDZ 17 ft

SACHEON APP 135.4 344.7
SACHEON TWR 118.675 236.6
305.4

SACHEON/Sacheon(RKPS)
RNP RWY 06L

Note : Approach and circle to land under U.S. TERPS.



NOT TO SCALE

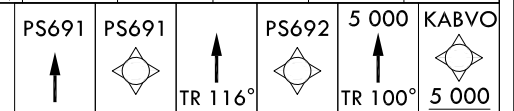
CAUTION - Missed Approach Climb Rate to 5 000 ft

RWY	Knots	60	120	180	240	TO
06L	V/V(fpm)	290	580	870	1 160	5 000

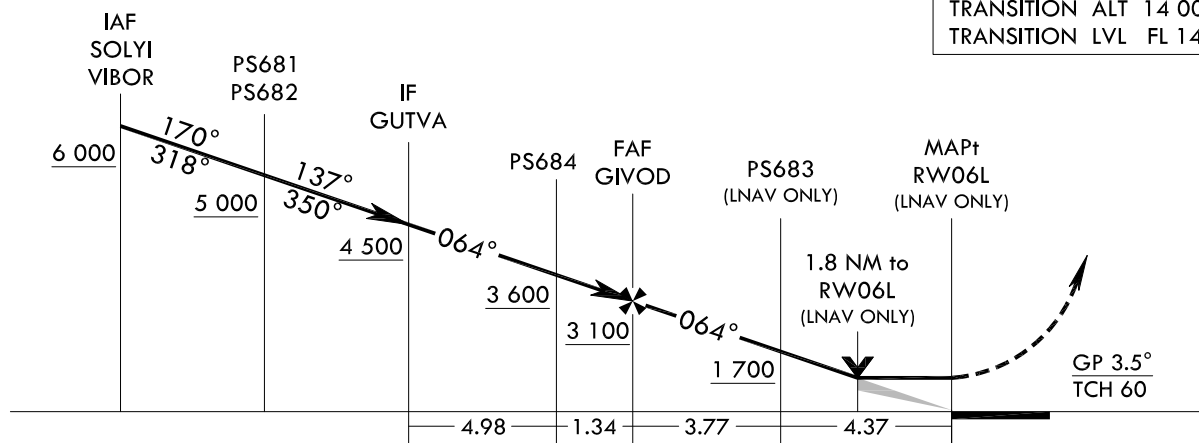
MISSED APPROACH

Climb to 5 000 ft on direct to PS691 and track 116° to PS692 and track 100° to KABVO at 5 000 ft and hold.

* VGSI and descent angles not coincident(VGSI 3.7° TCH 60).



TRANSITION ALT 14 000
TRANSITION LVL FL 140



CATEGORY		A	B	C	D
S-LNAV/VNAV DA	ALS		624-1 3/8	607(600-1 3/8)	
	ALS INOP		624-1 3/4	607(600-1 3/4)	
S-LNAV MDA	ALS		780-1 3/4	763(800-1 3/4)	
	ALS INOP		780-2 1/2	763(800-2 1/2)	
CIRCLING		780-2 1/2 755(800-2 1/2)	880-2 1/2 855(900-2 1/2)	1 020-3	995(1 000-3)

Change : New procedure.

AERONAUTICAL DATA TABULATION

Instrument Approach Procedure Coding Tables

RNP RWY 06L - via SOLYI to GUTVA(IF)

Serial Number	Path Descriptor	Waypoint Identifier	Fly- over	Course/Track M(°T)	Distance (NM)	Turn direction	Altitude (ft)	Speed (kt)	Coordinates	VPA/ TCH	Navigation specification	Remarks
001	IF	SOLYI	-	-	-	-	+6 000	-220	35°02'09.4"N 127°44'21.6"E	-	RNP APCH	-
002	TF	PS681	-	170(161.4)	3.5	-	+5 000	-220	34°58'50.0"N 127°45'43.0"E	-	RNP APCH	SDF Bank angle 23°
003	TF	GUTVA	-	137(128.7)	3.4	-	+4 500	-220	34°56'43.9"N 127°48'54.3"E	-	RNP APCH	-

RNP RWY 06L - via VIBOR to GUTVA(IF)

Serial Number	Path Descriptor	Waypoint Identifier	Fly- over	Course/Track M(°T)	Distance (NM)	Turn direction	Altitude (ft)	Speed (kt)	Coordinates	VPA/ TCH	Navigation specification	Remarks
001	IF	VIBOR	-	-	-	-	+6 000	-230	34°51'06.1"N 127°53'36.3"E	-	RNP APCH	-
002	TF	PS682	-	318(309.5)	3.5	-	+5 000	-220	34°53'19.8"N 127°50'19.2"E	-	RNP APCH	-
003	TF	GUTVA	-	350(341.1)	3.6	-	+4 500	-220	34°56'43.9"N 127°48'54.3"E	-	RNP APCH	-

RNP RWY 06L - via GUTVA(IF) to MAHF

Serial Number	Path Descriptor	Waypoint Identifier	Fly- over	Course/Track M(°T)	Distance (NM)	Turn direction	Altitude (ft)	Speed (kt)	Coordinates	VPA/ TCH	Navigation specification	Remarks
001	TF	GUTVA	-	-	-	-	+4 500	-220	34°56'43.9"N 127°48'54.3"E	-	RNP APCH	IF
002	TF	PS684	-	064(055.4)	5.0	-	+3 600	-	34°59'33.4"N 127°53'53.5"E	-	RNP APCH	-
003	TF	GIVOD	-	064(055.5)	1.3	-	+3 100	-	35°00'19.1"N 127°55'14.3"E	-3.5/60	RNP APCH	FAF
004	TF	PS683	-	064(055.5)	3.8	-	+1 700	-	35°02'27.4"N 127°59'01.3"E	-	RNP APCH	LNAV ONLY
005	DF	RW06L	Y	064(055.5)	4.4	-	-	-	35°04'55.9"N 128°03'24.5"E	-	RNP APCH	MAPt LNAV ONLY
006	TF	PS691	-	-	-	-	-	-230	35°06'59.9"N 128°07'05.0"E	-	RNP APCH	-
007	TF	PS692	-	116(107.6)	5.2	-	-	-230	35°05'25.4"N 128°13'06.3"E	-	-	-
008	TF	KABVO	-	100(091.6)	7.0	-	+5 000	-230	35°05'13.6"N 128°21'37.6"E	-	RNP APCH	-

HOLDING PROCEDURE

Holding Identification	Path Descriptor	Waypoint Identifier	Fly- over	Course/Track M(°T)	Distance (NM)	Turn direction	Altitude (ft)	Speed (kt)	Coordinates	VPA/ TCH	Navigation specification	Remarks
RNP RWY 06L	HM	SOLYI	-	085(076.6)	5.0	L	-7 000 +6 000	-230	35°02'09.4"N 127°44'21.6"E	-	RNAV 1	-
	HM	KABVO	-	100(091.6)	5.0	R	-7 000 +5 000	-230	35°05'13.6"N 128°21'37.6"E	-	RNAV 1	-

Change : New procedure.

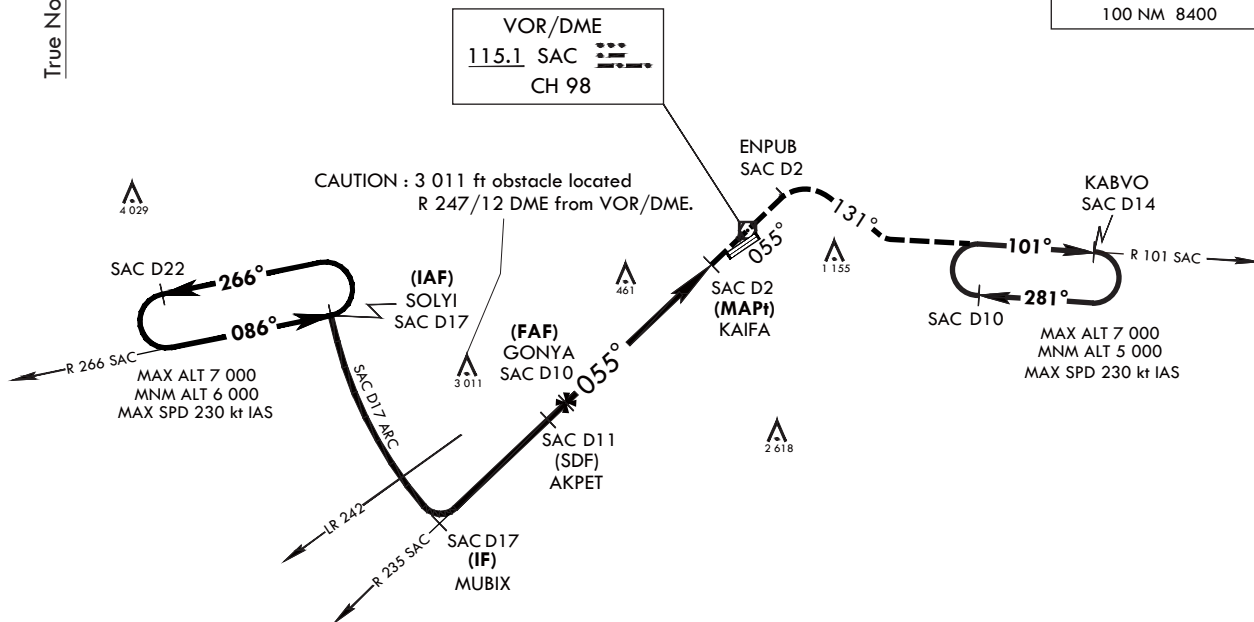
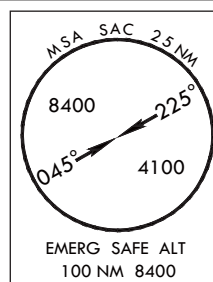
INSTRUMENT APPROACH CHART

AERODROME ELEV 25 ft
HEIGHTS RELATED TO THR RWY 06L - ELEV 15 ft
HIGHEST ELEV TDZ 17 ft

SACHEON APP	135.4	344.7
SACHEON TWR	118.675	236.6
	305.4	

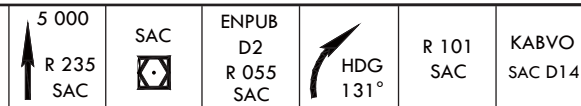
SACHEON/Sacheon(RKPS) VOR RWY 06L

ELEV, ALT IN FEET
DIST IN NM
BRG ARE MAG
VAR 8° W

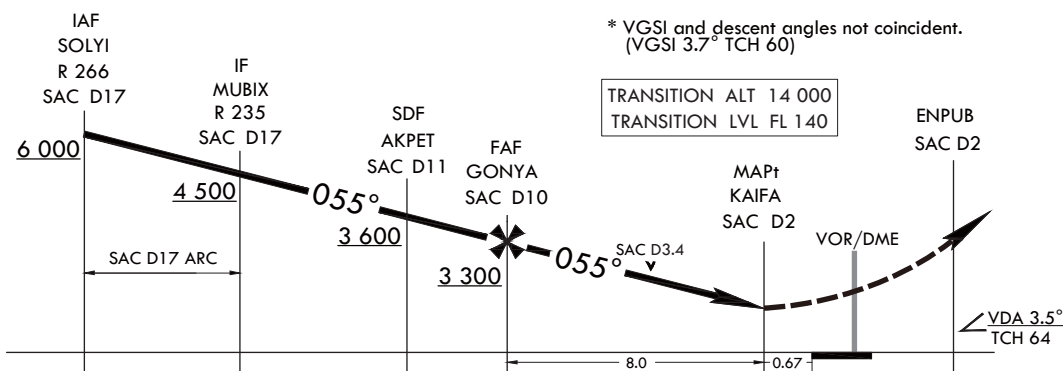


NOT TO SCALE

MISSED APPROACH : Climb to 5 000 ft via track on R 235 SAC to SAC over and track on R 055 SAC to ENPUB, HDG 131° to intercept R 101 SAC and track on R 101 SAC to KABVO and hold, continue climb-in-hold to 5 000 ft.



* VGSI and descent angles not coincident.
(VGSI 3.7° TCH 60)



CATEGORY	A	B	C	D
S-VOR 06L*	880/40	863(900-7/8)	880-2	863(900-2)
CIRCLING**	880-1 1/4 855(900-1 1/4)	900-1 1/4 875(900-1 1/4)	1 000-3	975(1 000-3)

* When ALS INOP, increase CAT A RVR to 55 and VIS to 1 mile, CAT B RVR to 60 and VIS to 1 1/4 miles, CAT CD VIS to 2 1/2 miles.
** Circling is not authorized SE of RWY 06/24.

Change : Information of procedure name(VOR/DME → VOR).

INTENTIONALLY

LEFT

BLANK

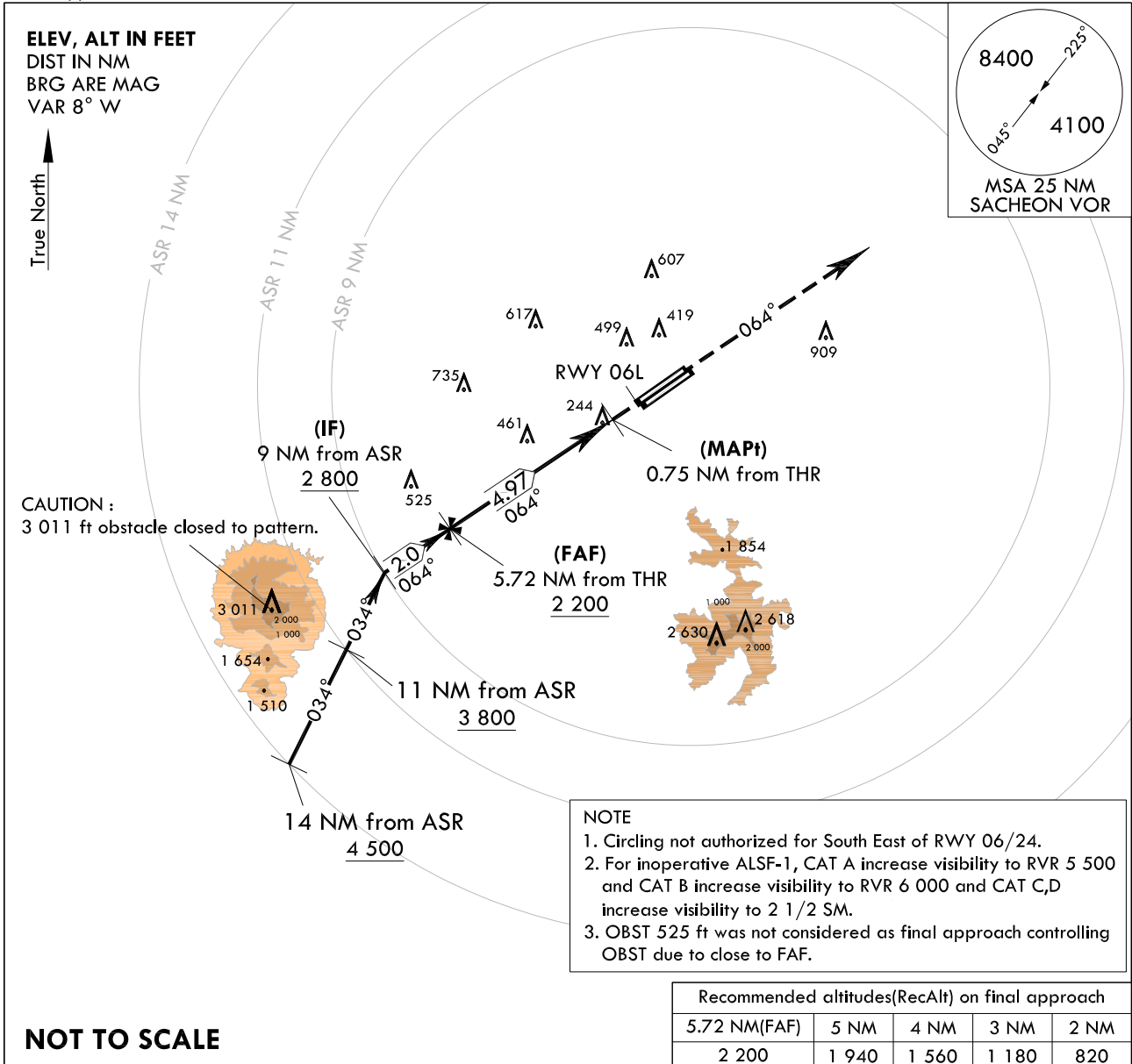
**INSTRUMENT
APPROACH
CHART**

AERODROME ELEV 25 ft
HEIGHTS RELATED TO
THR RWY 06L - ELEV 15 ft
HIGHEST ELEV TDZ 17 ft

SACHEON APP 135.4 344.7
SACHEON TWR 118.675 236.6
305.4

**SACHEON/Sacheon(RKPS)
ASR
RWY 06L**

Note : Approach and circle to land under U.S. TERPS.



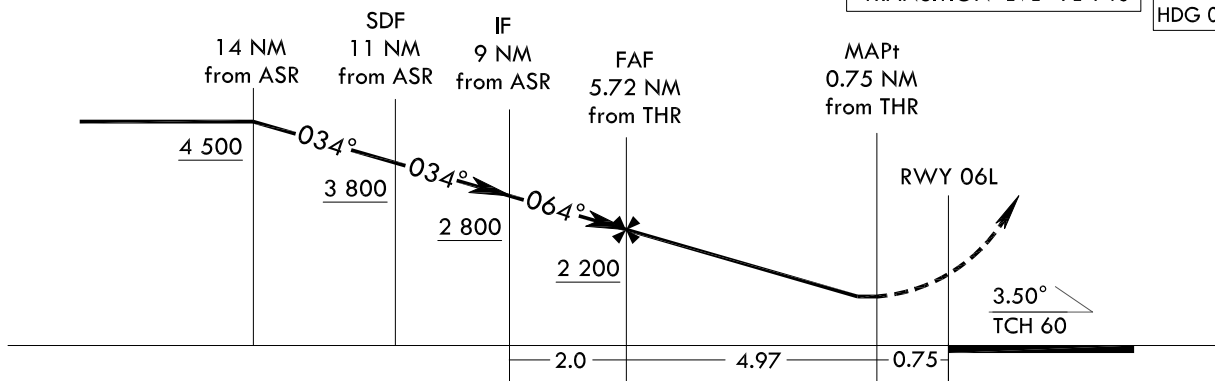
NOT TO SCALE

MISSED APPROACH

Climb HDG 064° to 4 400 ft, then expect radar vector by ATC.

TRANSITION ALT 14 000
TRANSITION LVL FL 140

4 400
↑
HDG 064°



CATEGORY	A	B	C	D	E
S-ASR 06L	780/40 763(800-3/4)		780-1 3/4 763(800-1 3/4)		
CIRCLING	800-1 775(800-1)	900-1 1/4 875(900-1 1/4)	1 000-3 975(1 000-3)		1 120-3 1 095(1 100-3)

Change : New procedure.

INTENTIONALLY

LEFT

BLANK

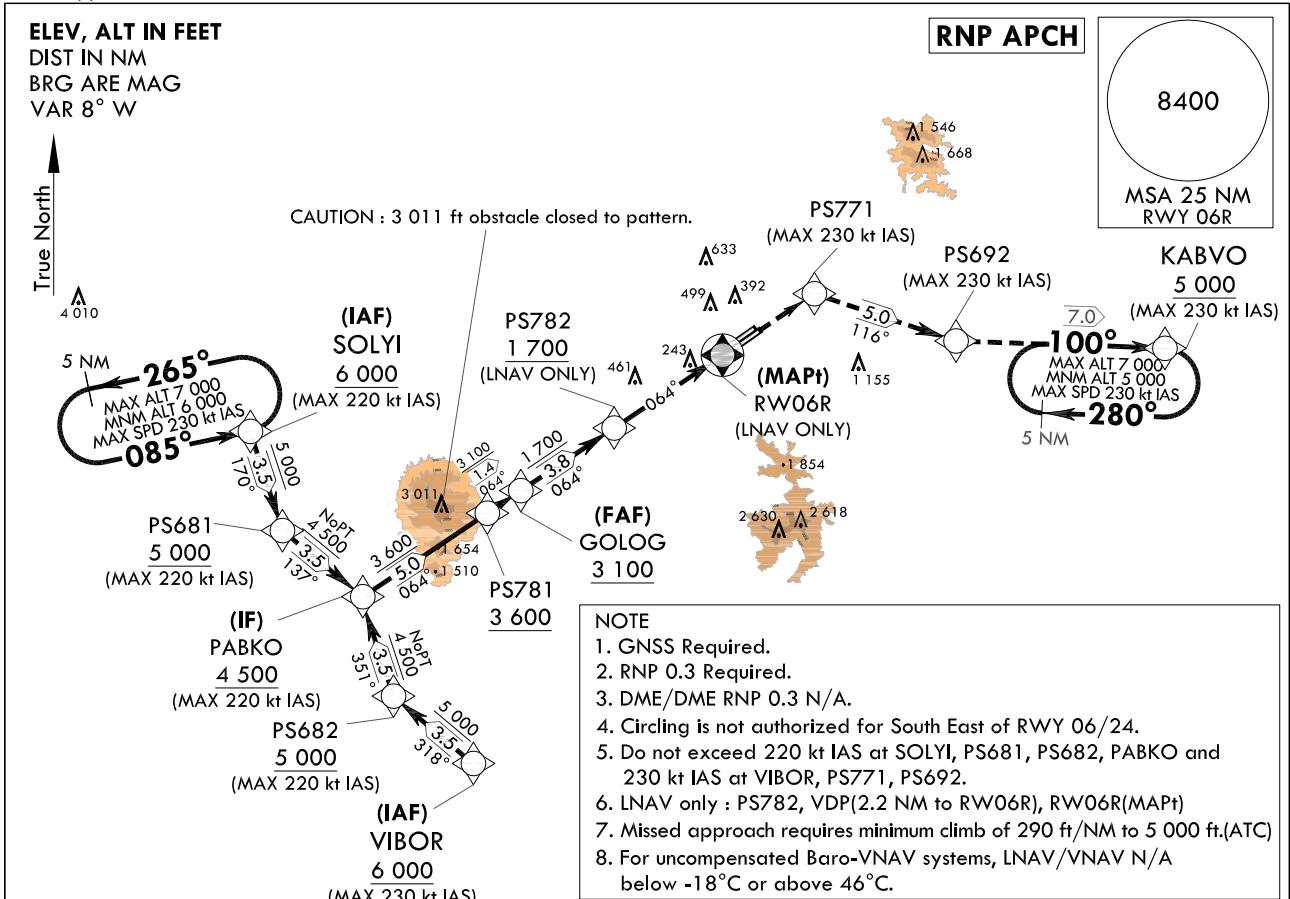
**INSTRUMENT
APPROACH
CHART**

AERODROME ELEV 25 ft
HEIGHTS RELATED TO
THR RWY 06R - ELEV 16 ft
HIGHEST ELEV TDZ 19 ft

SACHEON APP 135.4 344.7
SACHEON TWR 118.675 236.6
305.4

SACHEON/Sacheon(RKPS)
RNP
RWY 06R

Note : Approach and circle to land under U.S. TERPS.



- NOTE**
- GNSS Required.
 - RNP 0.3 Required.
 - DME/DME RNP 0.3 N/A.
 - Circling is not authorized for South East of RWY 06/24.
 - Do not exceed 220 kt IAS at SOLYI, PS681, PS682, PABKO and 230 kt IAS at VIBOR, PS771, PS692.
 - LNAV only : PS782, VDP(2.2 NM to RW06R), RW06R(MAPt)
 - Missed approach requires minimum climb of 290 ft/NM to 5 000 ft.(ATC)
 - For uncompensated Baro-VNAV systems, LNAV/VNAV N/A below -18°C or above 46°C.

CAUTION - Missed Approach Cimb Rate

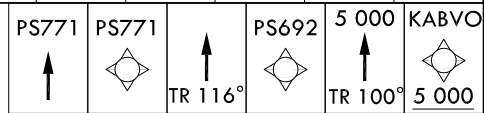
RWY	Knots	60	120	180	240	TO
06R	V/V(fpm)	290	580	870	1 160	5 000

NOT TO SCALE

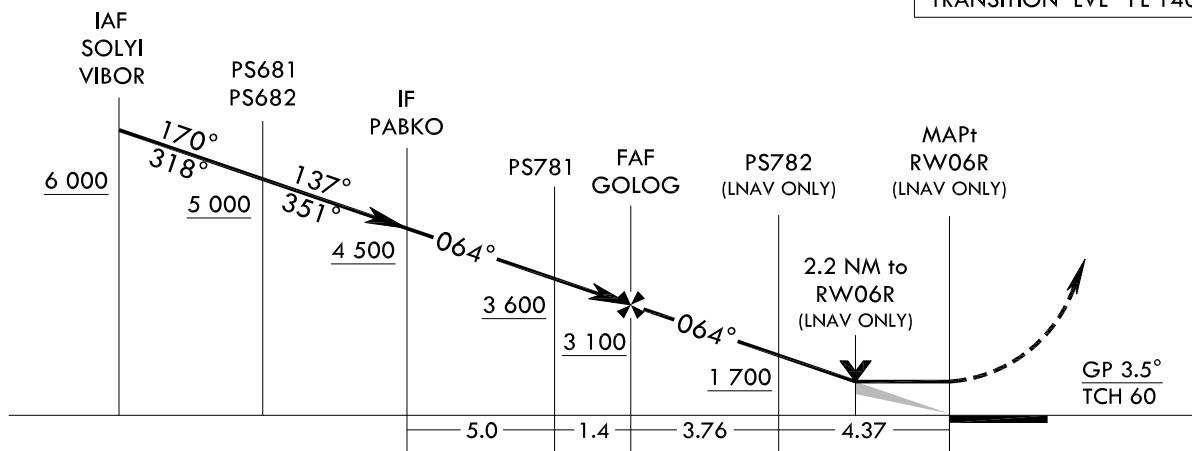
MISSED APPROACH

Climb to 5 000 ft on direct to PS771 and track 116° to PS692 and track 100° to KABVO at 5 000 ft and hold.

* VGS1 and descent angles not coincident (VGS1 3.0° TCH 53).



TRANSITION ALT 14 000
TRANSITION LVL FL 140



CATEGORY		A	B	C	D
S-LNAV/VNAV DA	ALS		624-1 3/8	605(600-1 3/8)	
	ALS INOP		624-1 3/4	605(600-1 3/4)	
S-LNAV MDA	ALS		780-1 3/4	761(800-1 3/4)	
	ALS INOP		780-2 1/2	761(800-2 1/2)	
CIRCLING		780-2 1/2 755(800-2 1/2)	880-2 1/2 855(900-2 1/2)	1 020-3 995(1 000-3)	

Change : Page control.

AERONAUTICAL DATA TABULATION

Instrument Approach Procedure Coding Tables

RNP RWY 06R - via SOLYI to PABKO(IF)

Serial Number	Path Descriptor	Waypoint Identifier	Fly-over	Course/Track M(°T)	Distance (NM)	Turn direction	Altitude (ft)	Speed (kt)	Coordinates	VPA/ TCH	Navigation specification	Remarks
001	IF	SOLYI	-	-	-	-	+6 000	-220	35°02'09.4"N 127°44'21.6"E	-	RNP APCH	-
002	TF	PS681	-	170(161.4)	3.5	-	+5 000	-220	34°58'50.0"N 127°45'43.0"E	-	RNP APCH	SDF Bank angle 23°
003	TF	PABKO	-	137(128.7)	3.5	-	+4 500	-220	34°56'39.1"N 127°49'01.5"E	-	RNP APCH	NoPT

RNP RWY 06R - via VIBOR to PABKO(IF)

Serial Number	Path Descriptor	Waypoint Identifier	Fly-over	Course/Track M(°T)	Distance (NM)	Turn direction	Altitude (ft)	Speed (kt)	Coordinates	VPA/ TCH	Navigation specification	Remarks
001	IF	VIBOR	-	-	-	-	+6 000	-230	34°51'06.1"N 127°53'36.3"E	-	RNP APCH	-
002	TF	PS682	-	318(309.5)	3.5	-	+5 000	-220	34°53'19.8"N 127°50'19.2"E	-	RNP APCH	-
003	TF	PABKO	-	351(342.2)	3.5	-	+4 500	-220	34°56'39.1"N 127°49'01.5"E	-	RNP APCH	NoPT

RNP RWY 06R - via PABKO(IF) to MAHF

Serial Number	Path Descriptor	Waypoint Identifier	Fly-over	Course/Track M(°T)	Distance (NM)	Turn direction	Altitude (ft)	Speed (kt)	Coordinates	VPA/ TCH	Navigation specification	Remarks
001	TF	PABKO	-	-	-	-	+4 500	-220	34°56'39.1"N 127°49'01.5"E	-	RNP APCH	IF
002	TF	PS781	-	064(055.4)	5.02	-	+3 600	-	34°59'30.2"N 127°54'03.5"E	-	RNP APCH	-
003	TF	GOLOG	-	064(055.5)	1.35	-	+3 100	-	35°00'16.1"N 127°55'24.65"E	-3.5/60	RNP APCH	FAF
004	TF	PS782	-	064(055.5)	3.76	-	+1 700	-	35°02'24.1"N 127°59'11.3"E	-	RNP APCH	LNAV ONLY
005	DF	RW06R	Y	064(055.6)	4.37	-	-	-	35°04'52.6"N 128°03'34.9"E	-	RNP APCH	MAHF LNAV ONLY
006	TF	PS771	-	064(055.6)	-	-	-	-230	35°06'58.3"N 128°07'18.2"E	-	RNP APCH	-
007	TF	PS692	-	116(108.0)	5.01	-	-	-230	35°05'25.4"N 128°13'06.3"E	-	-	-
008	TF	KABVO	-	100(091.6)	7.00	-	+5 000	-230	35°05'13.6"N 128°21'37.6"E	-	RNP APCH	-

HOLDING PROCEDURE

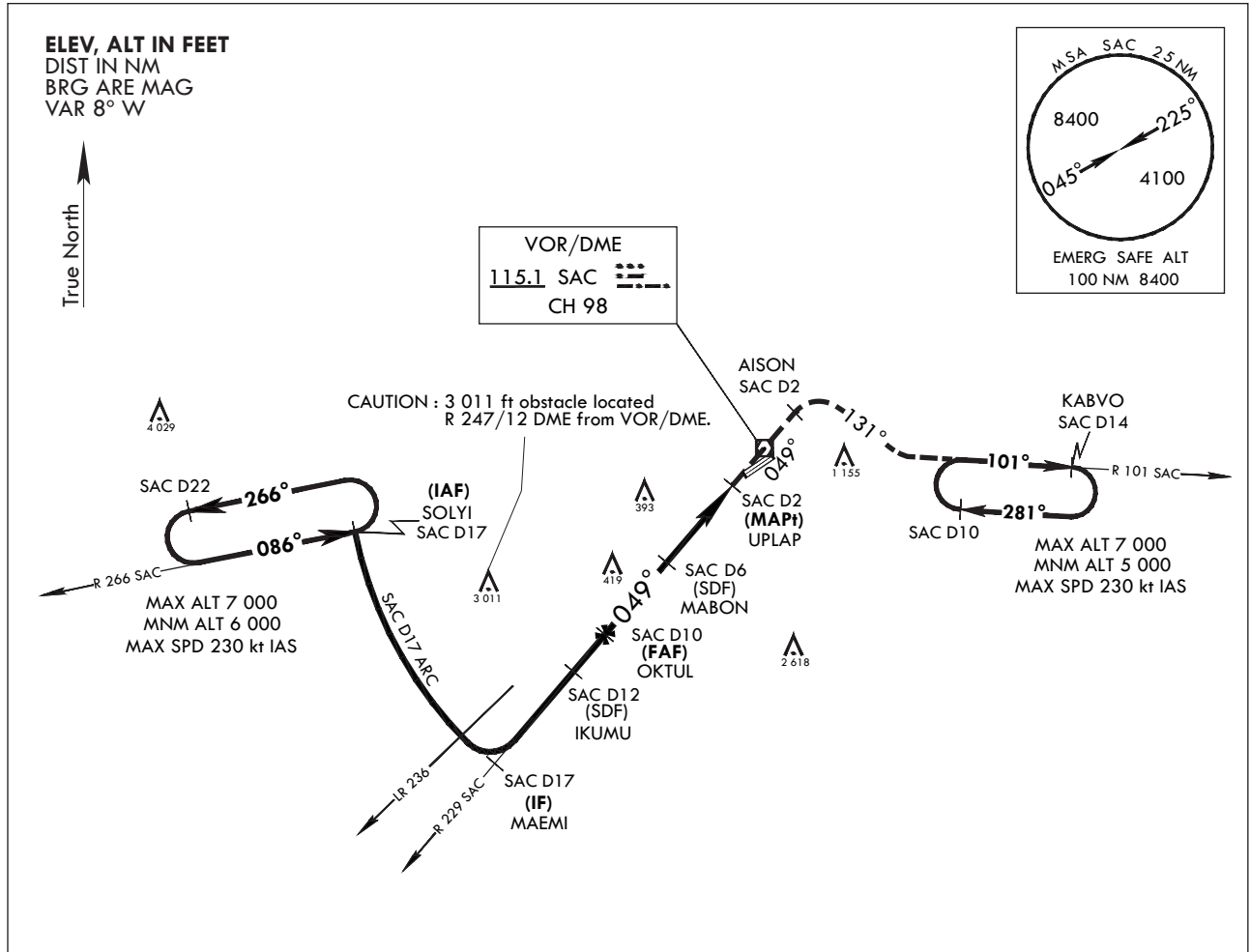
Holding Identification	Path Descriptor	Waypoint Identifier	Fly-over	Course/Track M(°T)	Distance (NM)	Turn direction	Altitude (ft)	Speed (kt)	Coordinates	VPA/ TCH	Navigation specification	Remarks
RNP RWY 06R	HM	SOLYI	-	085(076.6)	5.0	L	-7 000 +6 000	-230	35°02'09.4"N 127°44'21.6"E	-	RNAV 1	-
	HM	KABVO	-	100(091.6)	5.0	R	-7 000 +5 000	-230	35°05'13.6"N 128°21'37.6"E	-	RNAV 1	-

INSTRUMENT APPROACH CHART

AERODROME ELEV 25 ft
HEIGHTS RELATED TO THR RWY 06R - ELEV 16 ft
HIGHEST ELEV TDZ 19 ft

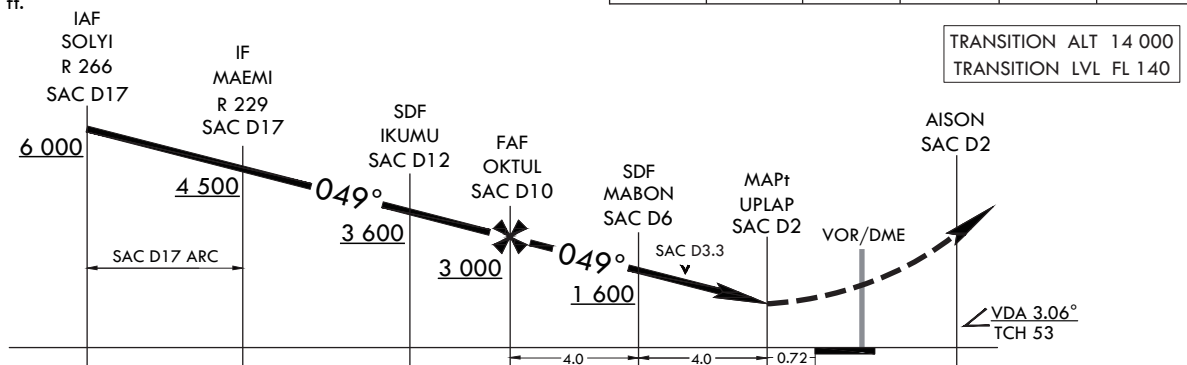
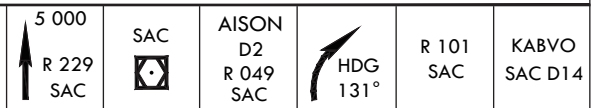
SACHEON APP 135.4 344.7
SACHEON TWR 118.675 236.6
305.4

SACHEON/Sacheon(RKPS) VOR RWY 06R



NOT TO SCALE

MISSED APPROACH: Climb to 5 000 ft via track on R 229 SAC to SAC over and track on R 049 SAC to AISON, then right turn HDG 131° to intercept R 101 SAC and track on R 101 SAC to KABVO and hold, continue climb-in-hold to 5 000 ft.



CATEGORY	A	B	C	D
S-VOR 06R*	700/40	681(700- ⁷ / ₈)	700-1½	681(700-1½)
CIRCLING**	800-1 755(800-1)	900-1¼ 875(900-1¼)	1 000-3	975(1 000-3)

* When ALS INOP, increase CAT AB RVR to 55 and VIS to 1 mile, CAT CD VIS to 2 miles.
** Circling is not authorized SE of RWY 06/24.

INTENTIONALLY

LEFT

BLANK

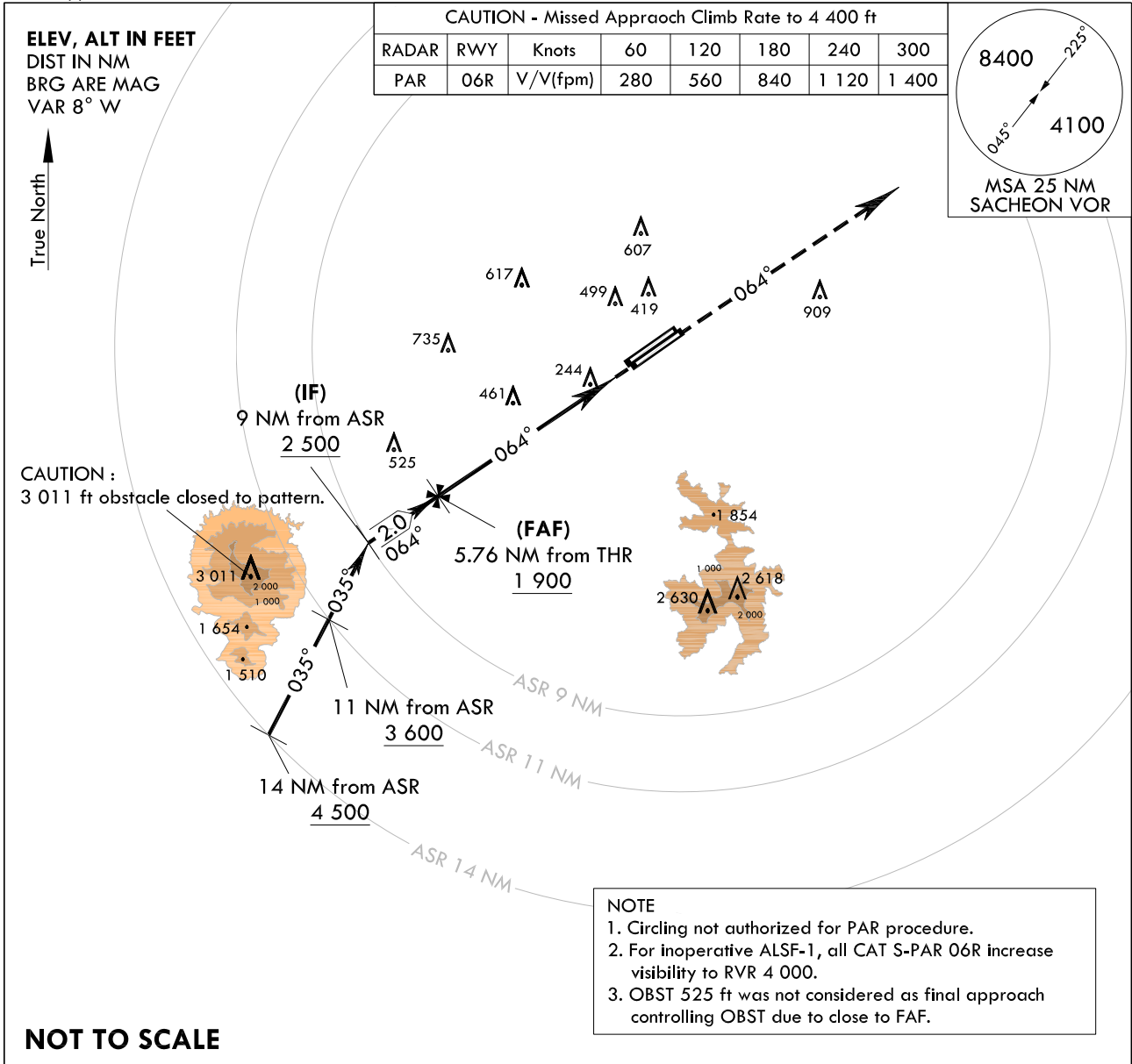
**INSTRUMENT
APPROACH
CHART**

AERODROME ELEV 25 ft
HEIGHTS RELATED TO
THR RWY 06R - ELEV 16 ft
HIGHEST ELEV TDZ 19 ft

SACHEON APP 135.4 344.7
SACHEON TWR 118.675 236.6
305.4

**SACHEON/Sacheon(RKPS)
PAR
RWY 06R**

Note : Approach and circle to land under U.S. TERPS.



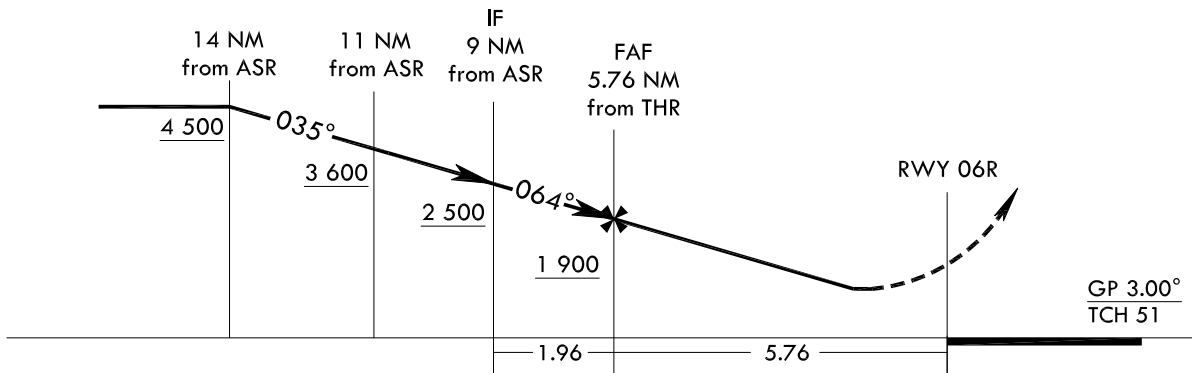
NOT TO SCALE

MISSED APPROACH

Climb HDG 064° to 4 400 ft, then expect radar vector by ATC.

TRANSITION ALT 14 000
TRANSITION LVL FL 140

4 400
↑
HDG 064°



CATEGORY	A	B	C	D	E
S-PAR 06R			219/30	200(200-5/8)	

Change : New procedure.

INTENTIONALLY

LEFT

BLANK

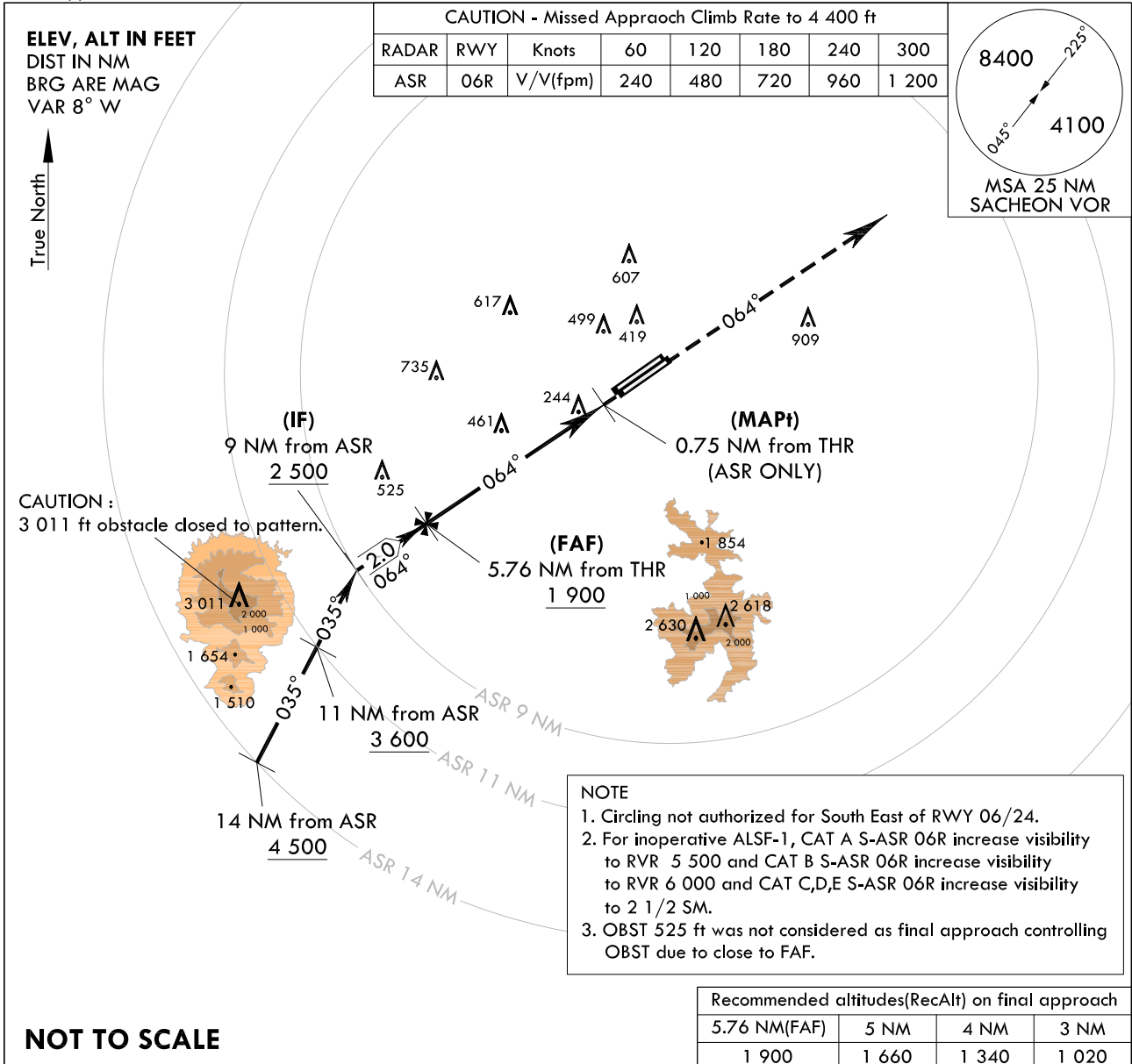
INSTRUMENT APPROACH CHART

AERODROME ELEV 25 ft
HEIGHTS RELATED TO
THR RWY 06R - ELEV 16 ft
HIGHEST ELEV TDZ 19 ft

SACHEON APP	135.4	344.7
SACHEON TWR	118.675	236.6
	305.4	

SACHEON/Sacheon(RKPS) ASR RWY 06R

Note : Approach and circle to land under U.S. TERPS.

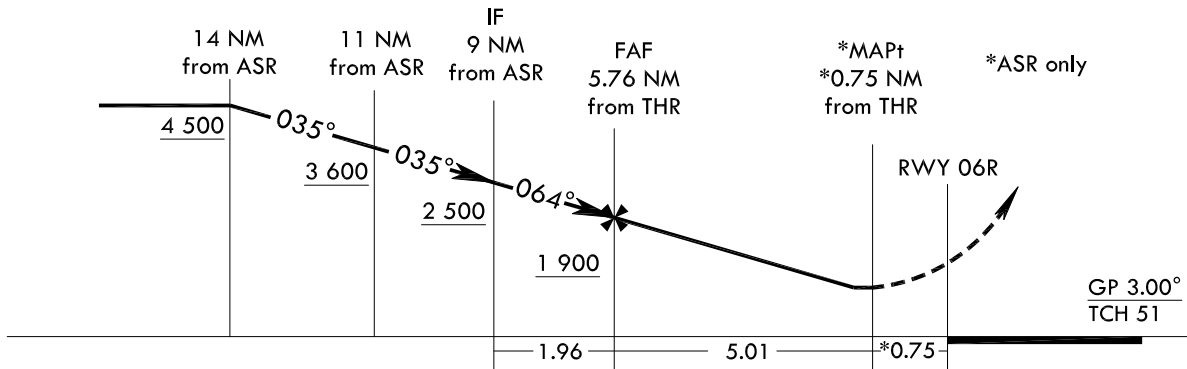


MISSED APPROACH

Climb HDG 064° to 4 400 ft, then expect radar vector by ATC.

TRANSITION ALT 14 000
TRANSITION LVL FL 140

4 400
↑
HDG 064°



CATEGORY	A	B	C	D	E
S-ASR 06R	820/45	801(800-7/8)	820-1 7/8	801(800-1 7/8)	
CIRCLING	820-1 795(800-1)	900-1 1/4 875(900-1 1/4)	1 000-3 975(1 000-3)		1 120-3 1 095(1 100-3)

Change : New procedure.

INTENTIONALLY

LEFT

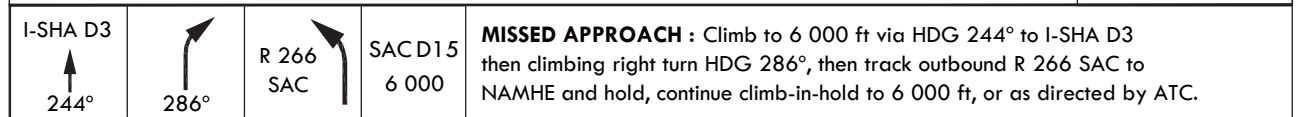
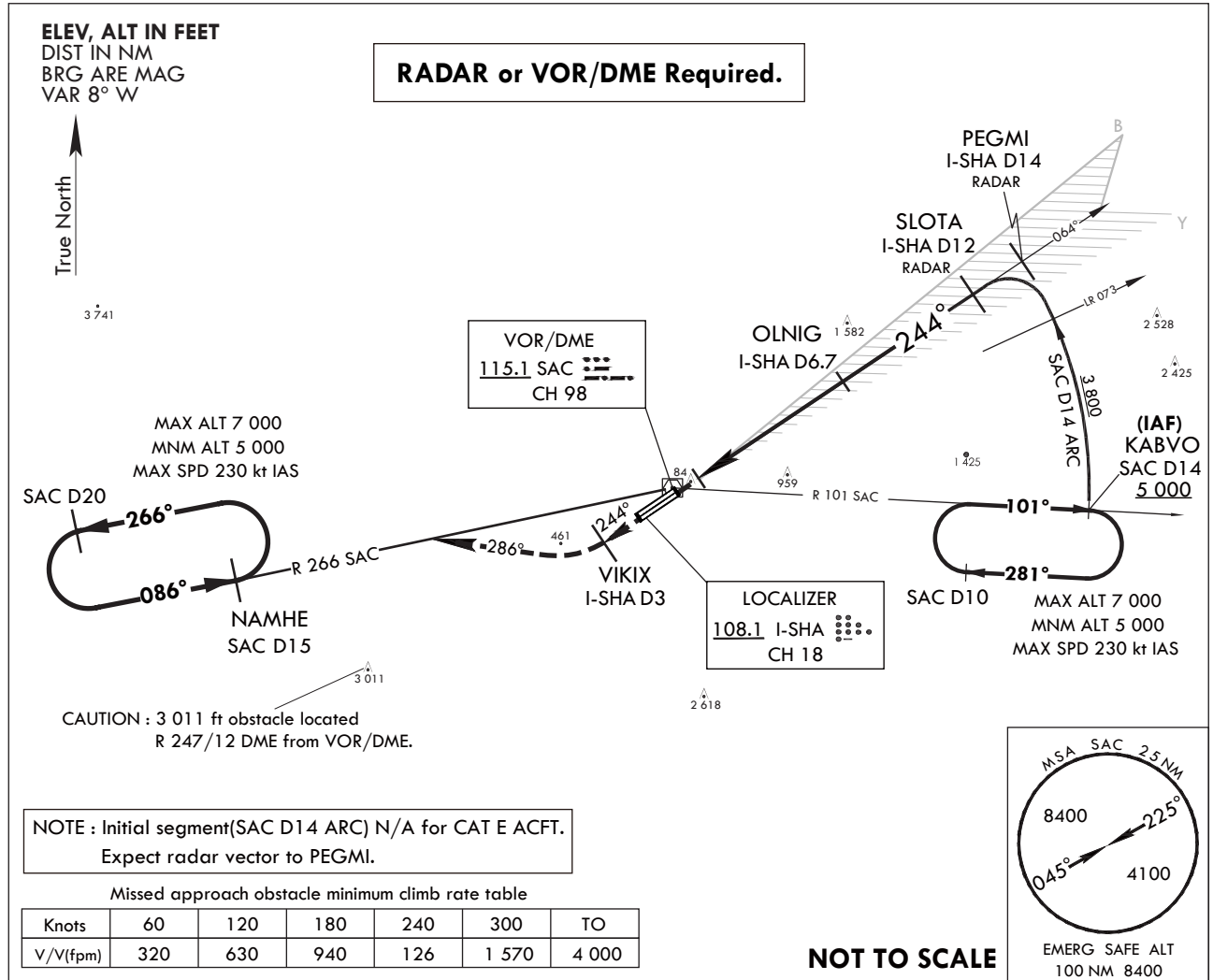
BLANK

**INSTRUMENT
APPROACH
CHART**

AERODROME ELEV 25 ft
HEIGHTS RELATED TO
THR RWY 24R - ELEV 19 ft
HIGHEST ELEV TDZ 19 ft

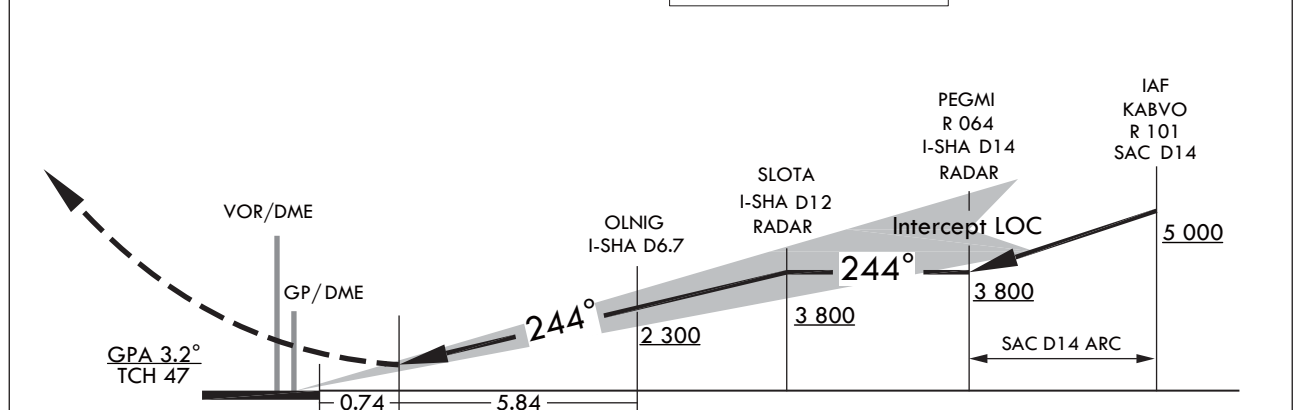
SACHEON APP 135.4 344.7
SACHEON TWR 118.675 236.6
305.4

SACHEON/Sacheon (RKPS)
ILS
RWY 24R



* VGSI and descent angles not coincident(VGSI 3.2°/TCH 56).
** Use I-SHA DME when on the localizer course.

TRANSITION ALT 14 000
TRANSITION LVL FL 140



CATEGORY	A	B	C	D	E
S-ILS 24R		317/45	298(300-7/8)		

INTENTIONALLY

LEFT

BLANK

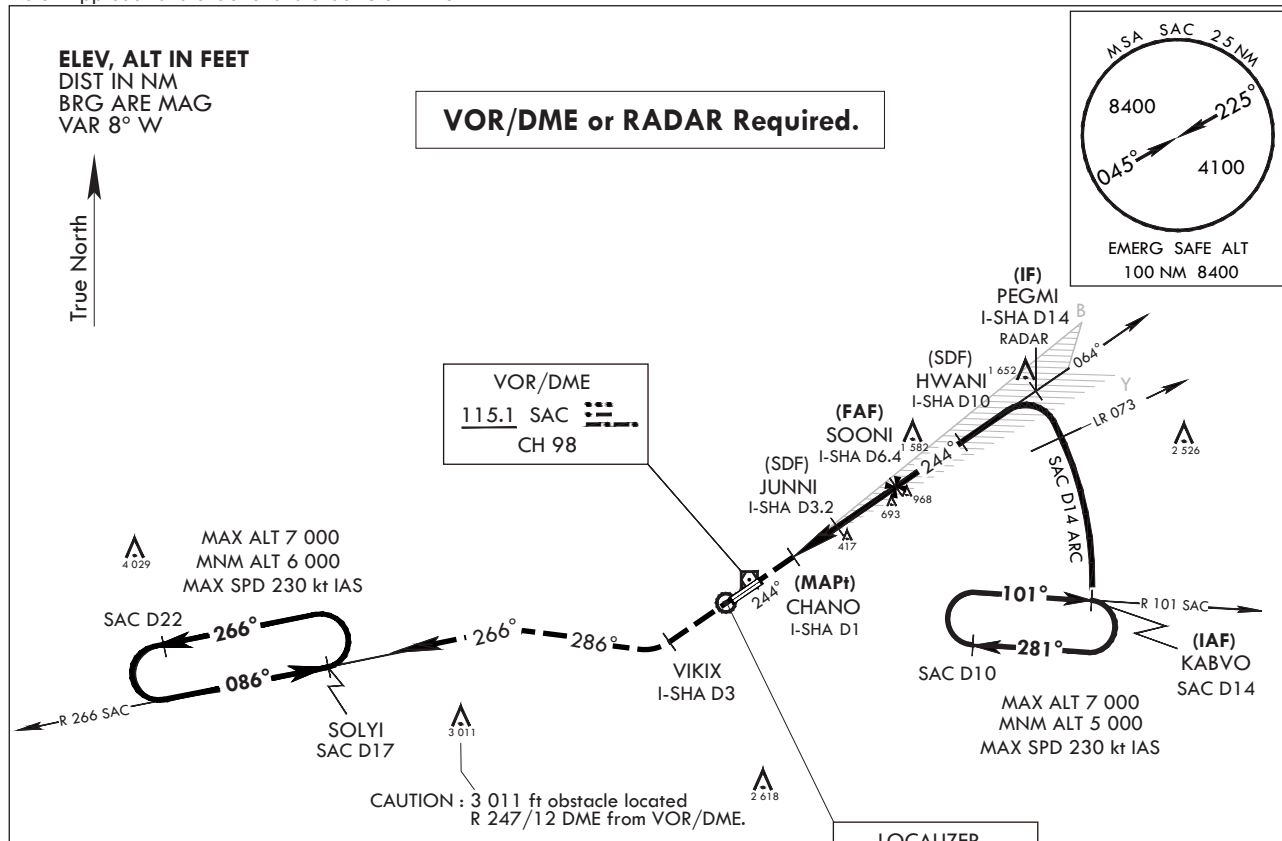
INSTRUMENT APPROACH CHART

AERODROME ELEV 25 ft
HEIGHTS RELATED TO
THR RWY 24R - ELEV 19 ft
HIGHEST ELEV TDZ 19 ft

SACHEON APP 135.4 344.7
SACHEON TWR 118.675 236.6
305.4

SACHEON/Sacheon(RKPS)
LOC RWY 24R

Note : Approach and circle to land under U.S. TERPS.

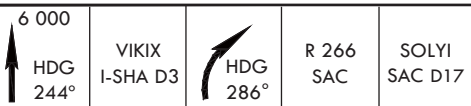


NOTE
1. CAT E aircraft using this procedure is vectored to PEGMI by RADAR.
2. RWY 24R, ALS not install.
3. OBST 968 ft was not considered as final approach controlling OBST due to close to FAF.

Missed approach obstacle minimum climb rate table

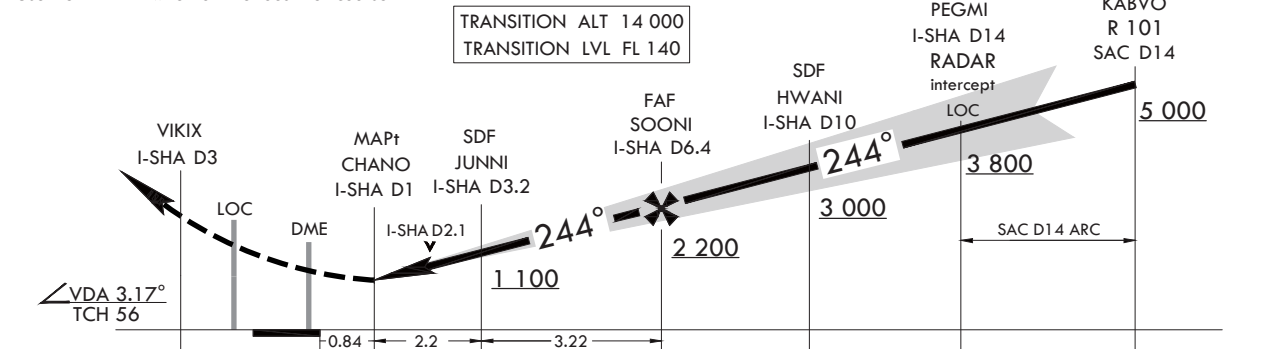
Knots	60	120	180	240	300	TO
V/V(fpm)	270	540	810	1 080	1 350	3 900

NOT TO SCALE



MISSED APPROACH : Climb to 6 000 ft via HDG 244° to I-SHA D3 and right turn HDG 286° and track outbound R 266 SAC to SOLYI(R 266 SAC/D17) and hold, continue climb-in-hold to 6 000 ft, or as directed ATC.

* Use I-SHA DME when on the localizer course.



CATEGORY	A	B	C	D	E
S-LOC 24R	740/55	721(800-1)		740-2	721(800-2)
C CIRCLING*	840-1¼ 815(900-1¼)	880-1¼ 855(900-1¼)	1 000-3 975(1 000-3)	1 020-3 995(1 000-3)	1 120-3 1 095(1 100-3)

* Circling is not authorized SE of RWY 24/06.

Change : Information of procedure name(LOC/DME → LOC).

INTENTIONALLY

LEFT

BLANK

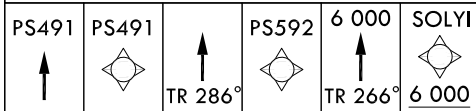
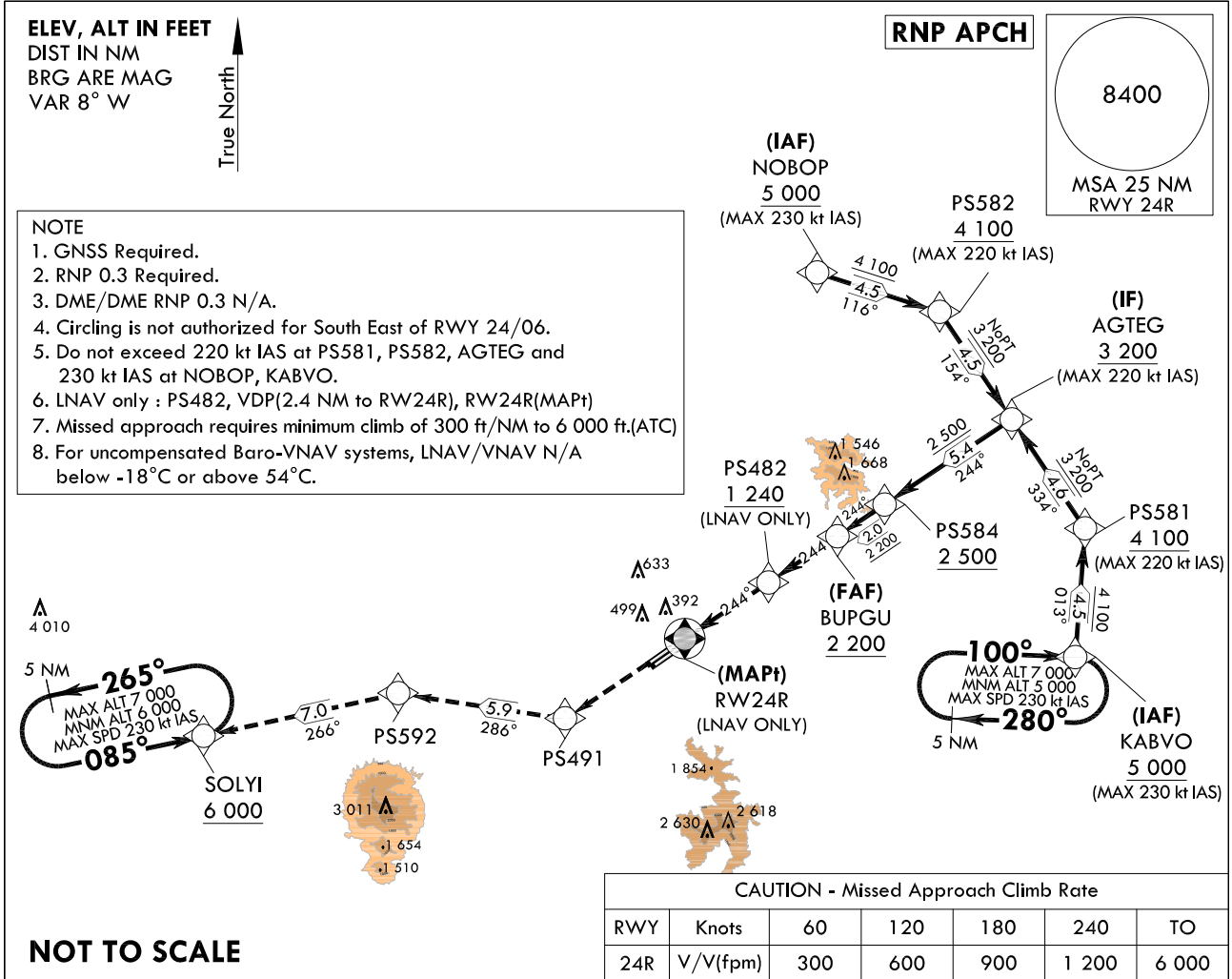
**INSTRUMENT
APPROACH
CHART**

AERODROME ELEV 25 ft
HEIGHTS RELATED TO
THR RWY 24R - ELEV 19 ft
HIGHEST ELEV TDZ 19 ft

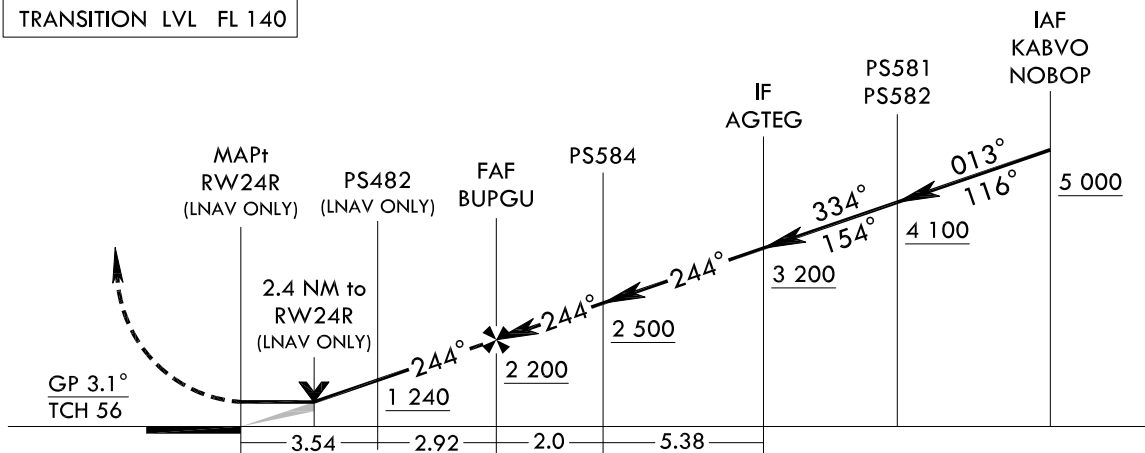
SACHEON APP 135.4 344.7
SACHEON TWR 118.675 236.6
305.4

**SACHEON/Sacheon(RKPS)
RNP
RWY 24R**

Note : Approach and circle to land under U.S. TERPS.



TRANSITION ALT 14 000
TRANSITION LVL FL 140



CATEGORY	A	B	C	D
S-LNAV/VNAV DA		783-2 1/2	764(800-2 1/2)	
S-LNAV MDA		880-2 1/2	861(900-2 1/2)	
CIRCLING	880-2 1/2	855(900-2 1/2)	1 020-3	995(1 000-3)

Change : Page control.

AERONAUTICAL DATA TABULATION

Instrument Approach Procedure Coding Tables

RNP RWY 24R - via KABVO to AGTEG(IF)

Serial Number	Path Descriptor	Waypoint Identifier	Fly-Over	Course/Track (M(°T))	Distance (NM)	Turn direction	Altitude (ft)	Speed (kt)	Coordinates	VPA/TCH	Navigation specification	Remarks
001	IF	KABVO	-	-	-	-	+5 000	-230	35°05'13.6"N 128°21'37.6"E	-	RNP APCH	-
002	TF	PS581	-	013(004.1)	4.5	-	+4 100	-220	35°09'44.5"N 128°22'01.4"E	-	RNP APCH	-
003	TF	AGTEG	-	334(325.8)	4.6	-	+3 200	-220	35°13'35.2"N 128°18'50.1"E	-	RNP APCH	NoPT

RNP RWY 24R - via NOBOP to AGTEG(IF)

Serial Number	Path Descriptor	Waypoint Identifier	Fly-Over	Course/Track (M(°T))	Distance (NM)	Turn direction	Altitude (ft)	Speed (kt)	Coordinates	VPA/TCH	Navigation specification	Remarks
001	IF	NOBOP	-	-	-	-	+5 000	-230	35°18'40.4"N 128°10'27.3"E	-	RNP APCH	-
002	TF	PS582	-	116(107.3)	4.5	-	+4 100	-220	35°17'19.6"N 128°15'43.6"E	-	RNP APCH	-
003	TF	AGTEG	-	154(145.7)	4.5	-	+3 200	-220	35°13'35.2"N 128°18'50.1"E	-	RNP APCH	NoPT

RNP RWY 24R - via AGTEG(IF) to MAHF

Serial Number	Path Descriptor	Waypoint Identifier	Fly-Over	Course/Track (M(°T))	Distance (NM)	Turn direction	Altitude (ft)	Speed (kt)	Coordinates	VPA/TCH	Navigation specification	Remarks
001	TF	AGTEG	-	-	-	-	+3 200	-220	35°13'35.2"N 128°18'50.1"E	-	RNP APCH	IF
002	TF	PS584	-	244(235.7)	5.4	-	+2 500	-	35°10'33.1"N 128°13'24.9"E	-	RNP APCH	-
003	TF	BUPGU	-	244(235.7)	2.0	-	+2 200	-	35°09'25.3"N 128°11'23.95"E	-3.1/56	RNP APCH	FAF
004	TF	PS482	-	244(235.7)	2.9	-	+1 240	-	35°07'46.4"N 128°08'27.8"E	-	RNP APCH	LNAV ONLY
005	DF	RW24R	Y	244(235.6)	3.5	-	-	-	35°05'46.3"N 128°04'54.2"E	-	RNP APCH	MAPT LNAV ONLY
006	TF	PS491	-	244(235.6)	5.05	-	-	-	35°02'54.6"N 127°59'49.5"E	-	RNP APCH	-
007	TF	PS592	-	286(278.0)	5.9	-	-	-	35°03'43.9"N 127°52'40.1"E	-	-	-
008	TF	SOLYI	-	266(257.1)	7.0	-	+6 000	-	35°02'09.4"N 127°44'21.6"E	-	RNP APCH	-

HOLDING PROCEDURE

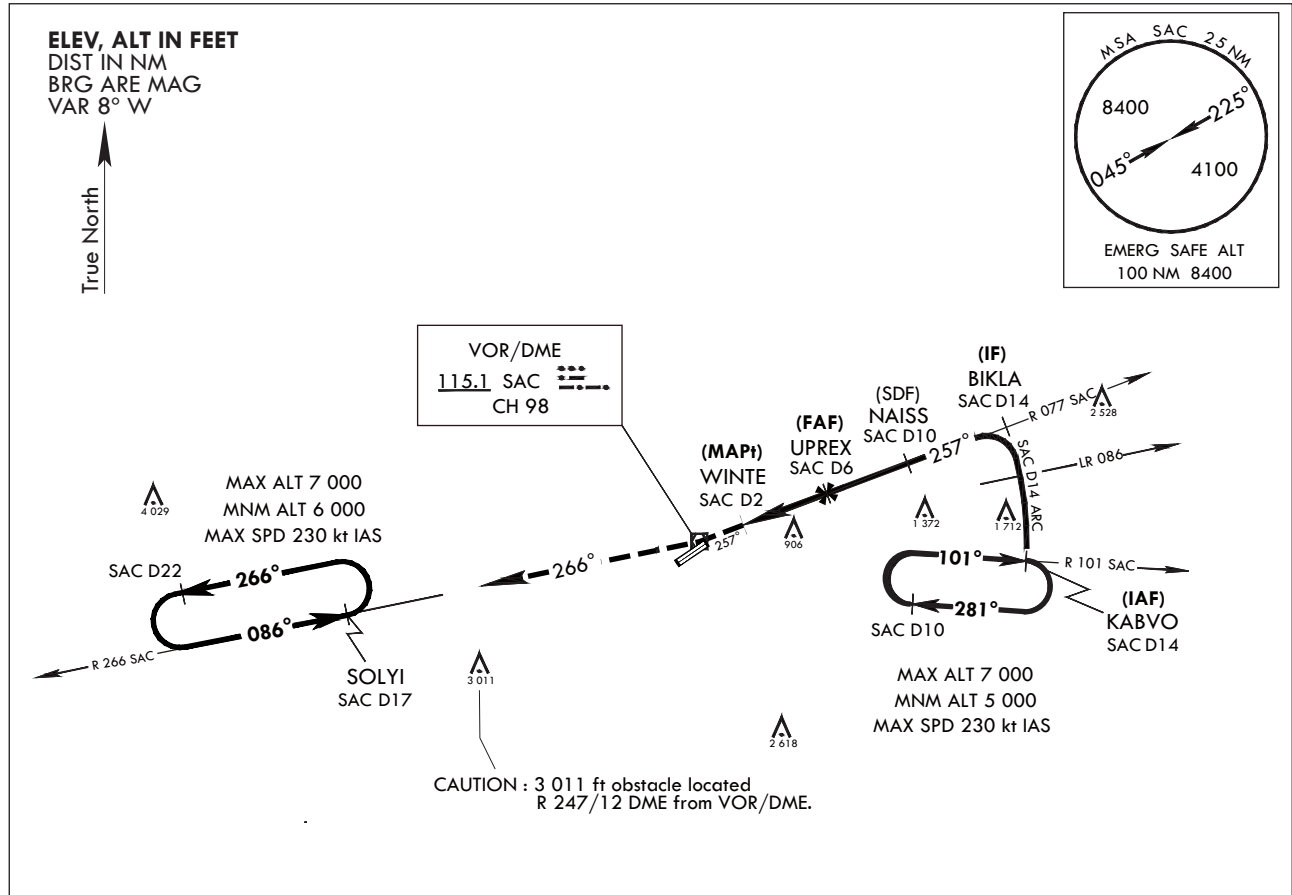
Holding Identification	Path Descriptor	Waypoint Identifier	Fly-Over	Course/Track (M(°T))	Distance (NM)	Turn direction	Altitude (ft)	Speed (kt)	Coordinates	VPA/TCH	Navigation specification	Remarks
RNP RWY 24R	HM	KABVO	-	100(091.6)	5.0	R	-7 000 +5 000	-230	35°05'13.6"N 128°21'37.6"E	-	RNAV 1	-
	HM	SOLYI	-	085(076.6)	5.0	L	-7 000 +6 000	-230	35°02'09.4"N 127°44'21.6"E	-	RNAV 1	-

**INSTRUMENT
APPROACH
CHART**

AERODROME ELEV 25 ft
HEIGHTS RELATED TO
THR RWY 24R - ELEV 19 ft
HIGHEST ELEV TDZ 19 ft

SACHEON APP	135.4	344.7
SACHEON TWR	118.675	236.6
	305.4	

SACHEON/Sacheon(RKPS)
VOR
RWY 24R

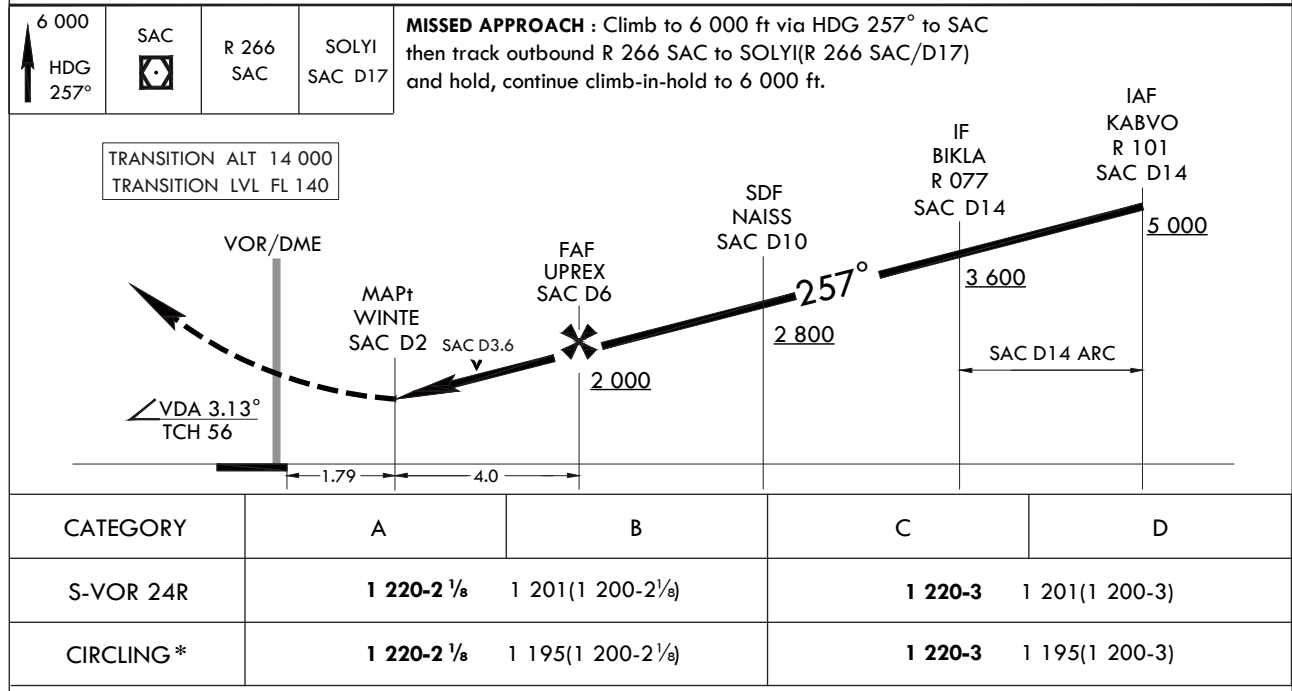


NOTE : RWY 24R, ALS not install.

Missed approach obstacle minimum climb rate table

Knots	60	120	180	240	300	TO
V/V(fpm)	210	420	630	830	1 040	4 000

NOT TO SCALE



* Circling is not authorized SE of RWY 24/06.

Change : Information of procedure name(VOR/DME → VOR).

INTENTIONALLY

LEFT

BLANK

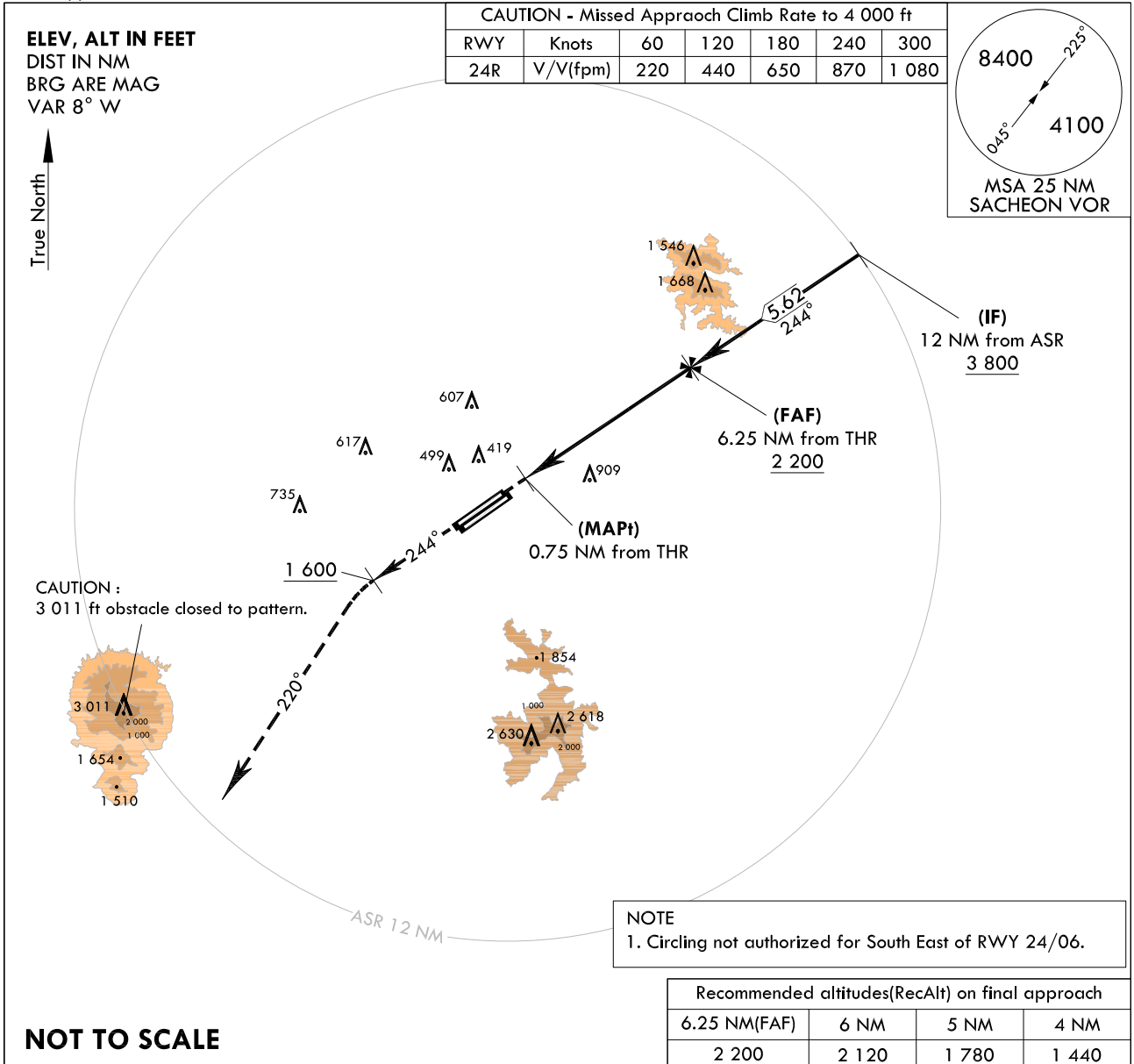
**INSTRUMENT
APPROACH
CHART**

AERODROME ELEV 25 ft
HEIGHTS RELATED TO
THR RWY 24R - ELEV 19 ft
HIGHEST ELEV TDZ 19 ft

SACHEON APP 135.4 344.7
SACHEON TWR 118.675 236.6
305.4

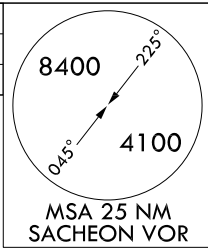
**SACHEON/Sacheon(RKPS)
ASR
RWY 24R**

Note : Approach and circle to land under U.S. TERPS.



CAUTION - Missed Approach Climb Rate to 4 000 ft

RWY	Knots	60	120	180	240	300
24R	V/V(fpm)	220	440	650	870	1 080



NOT TO SCALE

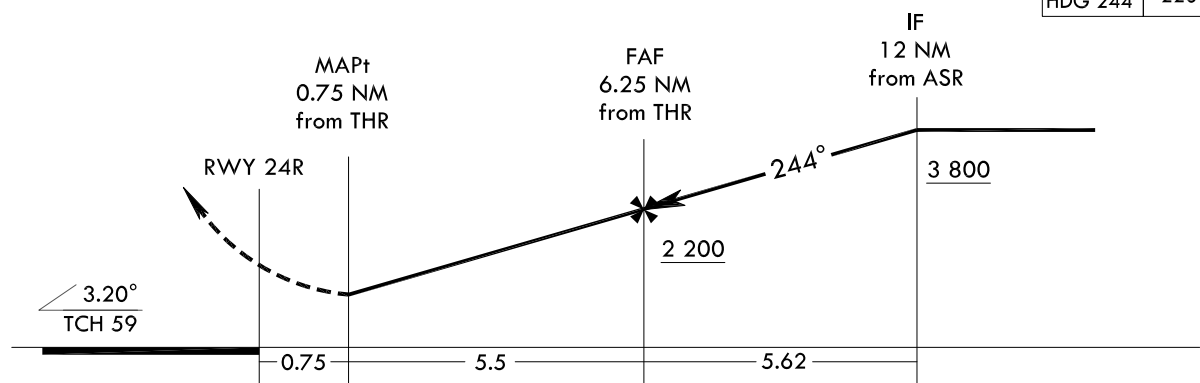
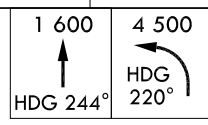
Recommended altitudes(RecAlt) on final approach

6.25 NM(FAF)	6 NM	5 NM	4 NM
2 200	2 120	1 780	1 440

MISSED APPROACH

Climb HDG 244° to 1 600 ft and turn left HDG 220° to 4 500 ft, then expect radar vector by ATC.

TRANSITION ALT 14 000
TRANSITION LVL FL 140



CATEGORY	A	B	C	D	E
S-ASR 24R	1 220/60 1 201(1 200-1 1/4)	1 220-1 1/2 1 201(1 200-1 1/2)	1 220-3	1 201(1 200-3)	
CIRCLING	1 220-1 1/4 1 195(1 200-1 1/4)	1 220-1 1/2 1 195(1 200-1 1/2)	1 220-3	1 195(1 200-3)	

Change : New procedure.

INTENTIONALLY

LEFT

BLANK

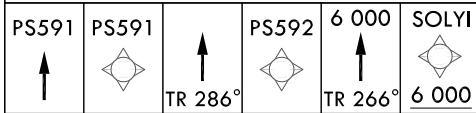
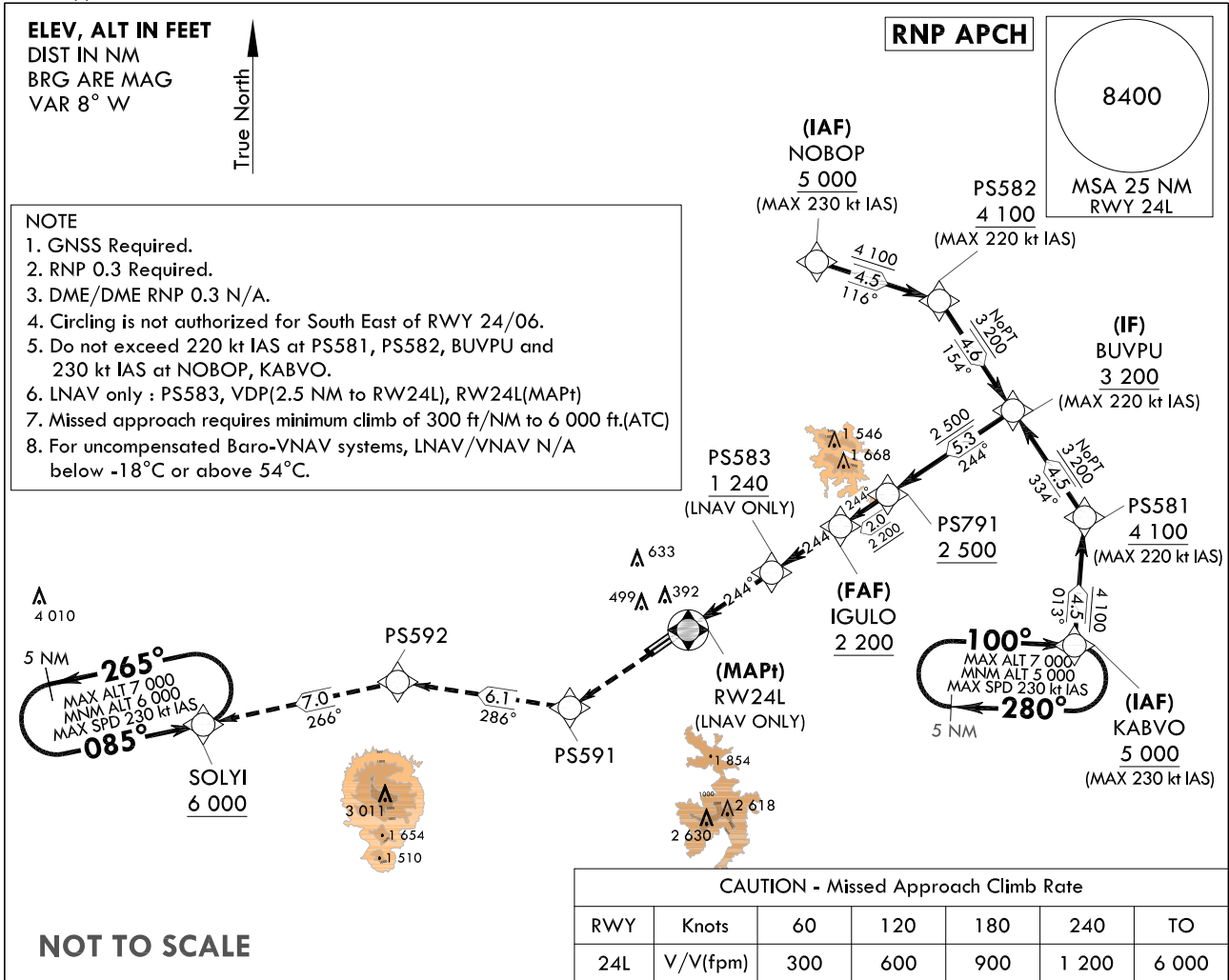
**INSTRUMENT
APPROACH
CHART**

AERODROME ELEV 25 ft
HEIGHTS RELATED TO
THR RWY 24L - ELEV 24 ft
HIGHEST ELEV TDZ 24 ft

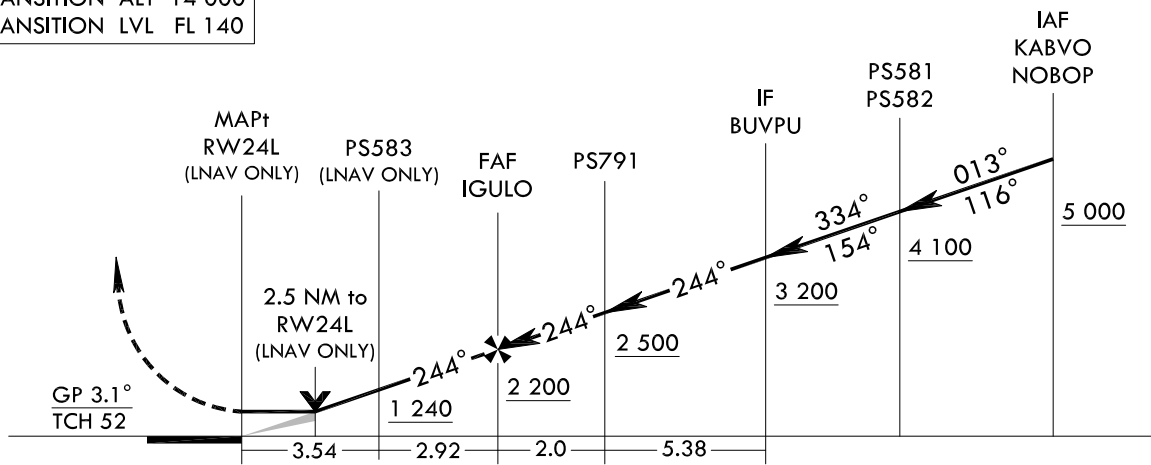
SACHEON APP 135.4 344.7
SACHEON TWR 118.675 236.6
305.4

**SACHEON/Sacheon(RKPS)
RNP
RWY 24L**

Note : Approach and circle to land under U.S. TERPS.



TRANSITION ALT 14 000
TRANSITION LVL FL 140



CATEGORY	A	B	C	D
S-LNAV/VNAV DA		781-2 1/2	757(800-2 1/2)	
S-LNAV MDA		880-2 1/2	856(900-2 1/2)	
CIRCLING	880-2 1/2	855(900-2 1/2)	1 020-3	995(1 000-3)

Change : Information of DIST for PS592(5.9 → 6.1).

AERONAUTICAL DATA TABULATION

Instrument Approach Procedure Coding Tables

RNP RWY 24L - via KABVO to BUVPJ(IF)

Serial Number	Path Descriptor	Waypoint Identifier	Fly-over	Course/Track M(°T)	Distance (NM)	Turn direction	Altitude (ft)	Speed (kt)	Coordinates	VPA/ TCH	Navigation specification	Remarks
001	IF	KABVO	-	-	-	-	+5 000	-230	35°05'13.6" N 128°21'37.6" E	-	RNP APCH	-
002	TF	PS581	-	013(004.1)	4.5	-	+4 100	-220	35°09'44.5" N 128°22'01.4" E	-	RNP APCH	-
003	TF	BUVPJ	-	334(325.8)	4.5	-	+3 200	-220	35°13'29.0" N 128°18'55.2" E	-	RNP APCH	NoPT

RNP RWY 24L - via NOBOP to BUVPJ(IF)

Serial Number	Path Descriptor	Waypoint Identifier	Fly-over	Course/Track M(°T)	Distance (NM)	Turn direction	Altitude (ft)	Speed (kt)	Coordinates	VPA/ TCH	Navigation specification	Remarks
001	IF	NOBOP	-	-	-	-	+5 000	-230	35°18'40.4" N 128°10'27.3" E	-	RNP APCH	-
002	TF	PS582	-	116(107.3)	4.5	-	+4 100	-220	35°17'19.6" N 128°15'43.6" E	-	RNP APCH	-
003	TF	BUVPJ	-	154(145.7)	4.6	-	+3 200	-220	35°13'29.0" N 128°18'55.2" E	-	RNP APCH	NoPT

RNP RWY 24L - via BUVPJ(IF) to MAHF

Serial Number	Path Descriptor	Waypoint Identifier	Fly-over	Course/Track M(°T)	Distance (NM)	Turn direction	Altitude (ft)	Speed (kt)	Coordinates	VPA/ TCH	Navigation specification	Remarks
001	TF	BUVPJ	-	-	-	-	+3 200	-220	35°13'29.0" N 128°18'55.2" E	-	RNP APCH	IF
002	TF	PS791	-	244(235.7)	5.3	-	+2 500	-	35°10'29.6" N 128°13'34.8" E	-	RNP APCH	-
003	TF	IGULO	-	244(235.7)	2.0	-	+2 200	-	35°09'21.8" N 128°11'33.8" E	-3.1/52	RNP APCH	FAF
004	TF	PS583	-	244(235.7)	2.9	-	+1 240	-	35°07'43.0" N 128°08'37.8" E	-	RNP APCH	LNAV ONLY
005	DF	RW24L	Y	244(235.6)	3.5	-	-	-	35°05'42.9" N 128°05'04.2" E	-	RNP APCH	^{MAPT} LNAV ONLY
006	TF	PS591	-	-	-	-	-	-	35°02'53.1" N 128°00'02.8" E	-	RNP APCH	-
007	TF	PS592	-	286(278.0)	6.1	-	-	-	35°03'43.9" N 127°52'40.1" E	-	-	-
008	TF	SOLYI	-	266(257.1)	7.0	-	+6 000	-	35°02'09.4" N 127°44'21.6" E	-	RNP APCH	-

HOLDING PROCEDURE

Holding Identification	Path Descriptor	Waypoint Identifier	Fly-over	Course/Track M(°T)	Distance (NM)	Turn direction	Altitude (ft)	Speed (kt)	Coordinates	VPA/ TCH	Navigation specification	Remarks
RNP RWY 24L	HM	KABVO	-	100(091.6)	5.0	R	-7 000 +5 000	-230	35°05'13.6" N 128°21'37.6" E	-	RNAV 1	-
	HM	SOLYI	-	085(076.6)	5.0	L	-7 000 +6 000	-230	35°02'09.4" N 127°44'21.6" E	-	RNAV 1	-

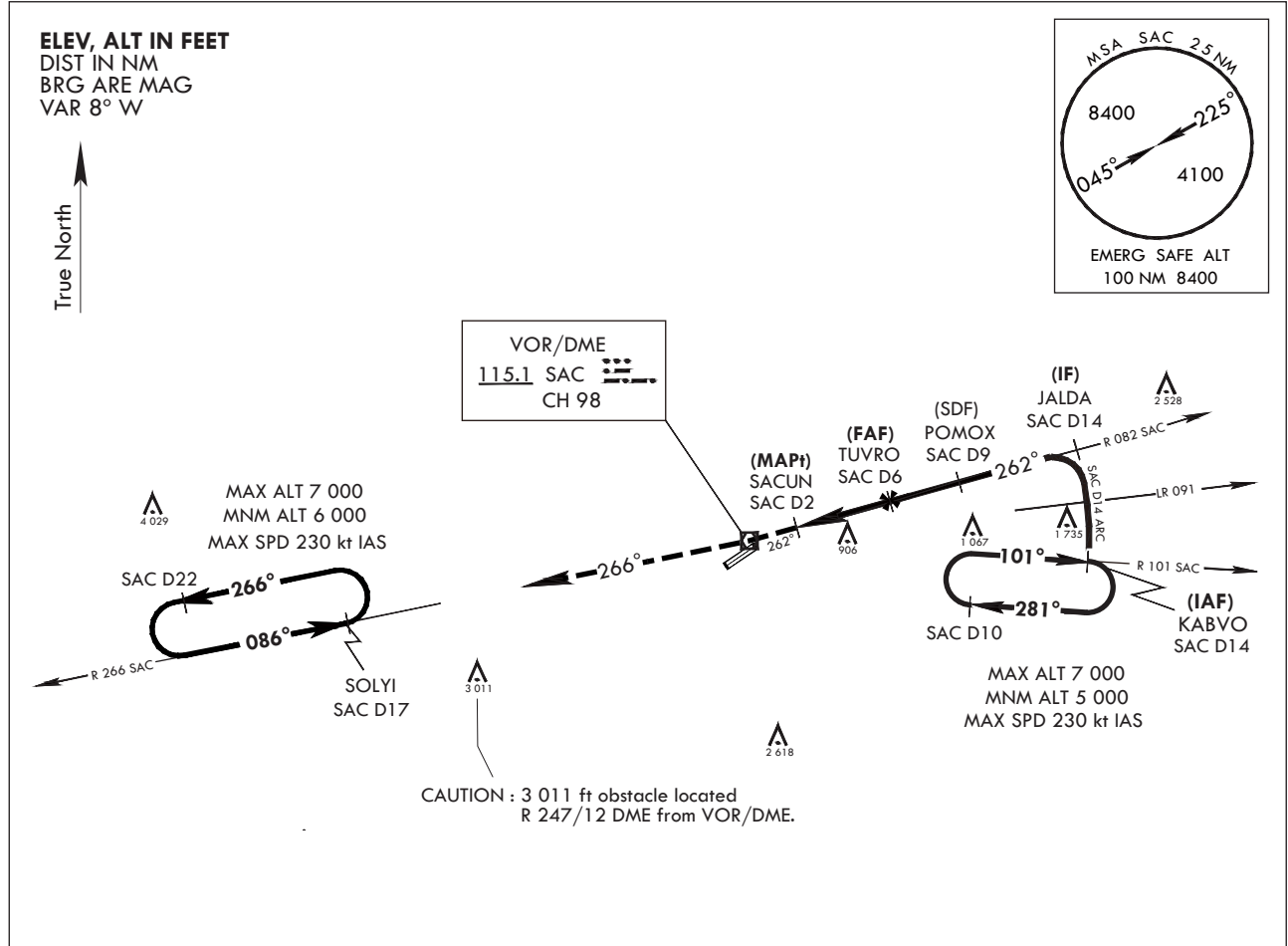
INSTRUMENT APPROACH CHART

AERODROME ELEV 25 ft
HEIGHTS RELATED TO
THR RWY 24L - ELEV 24 ft
HIGHEST ELEV TDZ 24 ft

SACHEON APP	135.4	344.7
SACHEON TWR	118.675	236.6
	305.4	

SACHEON/Sacheon (RKPS)
VOR RWY 24L

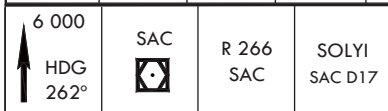
Note : Approach and circle to land under U.S. TERPS.



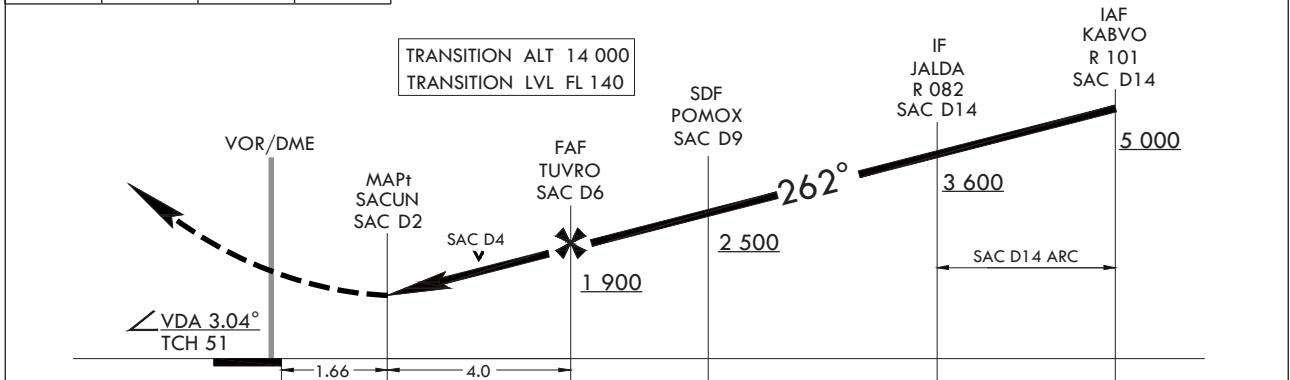
Missed approach obstacle minimum climb rate table

Knots	60	120	180	240	300	TO
V/V(fpm)	210	420	630	830	1 040	4 000

NOT TO SCALE



MISSED APPROACH : Climb to 6 000 ft via HDG 262° to SAC then track outbound R 266 SAC to SOLYI (R 266 SAC/D17) and hold, continue climb-in-hold to 6 000 ft.



CATEGORY	A	B	C	D
S-VOR 24L	1 220-2	1 196(1 200-2)	1 220-3	1 196(1 200-3)
CIRCLING*	1 220-2	1 195(1 200-2)	1 220-3	1 195(1 200-3)

* Circling is not authorized SE of RWY 24/06.

Change : Information of procedure name(VOR/DME → VOR).

INTENTIONALLY

LEFT

BLANK

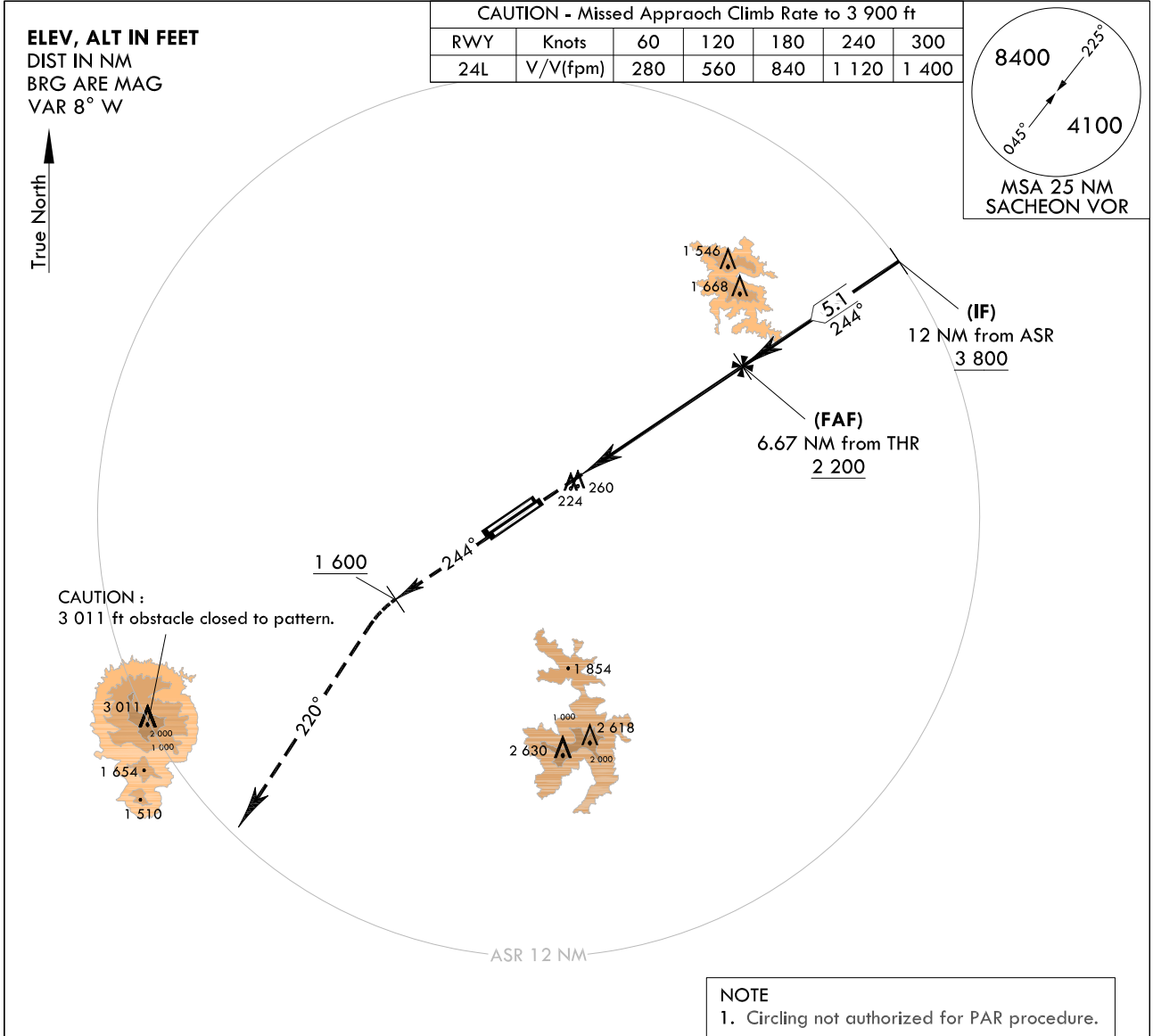
**INSTRUMENT
APPROACH
CHART**

AERODROME ELEV 25 ft
HEIGHTS RELATED TO
THR RWY 24L - ELEV 24 ft
HIGHEST ELEV TDZ 24 ft

SACHEON APP 135.4 344.7
SACHEON TWR 118.675 236.6
305.4

**SACHEON/Sacheon(RKPS)
PAR
RWY 24L**

Note : Approach and circle to land under U.S. TERPS.

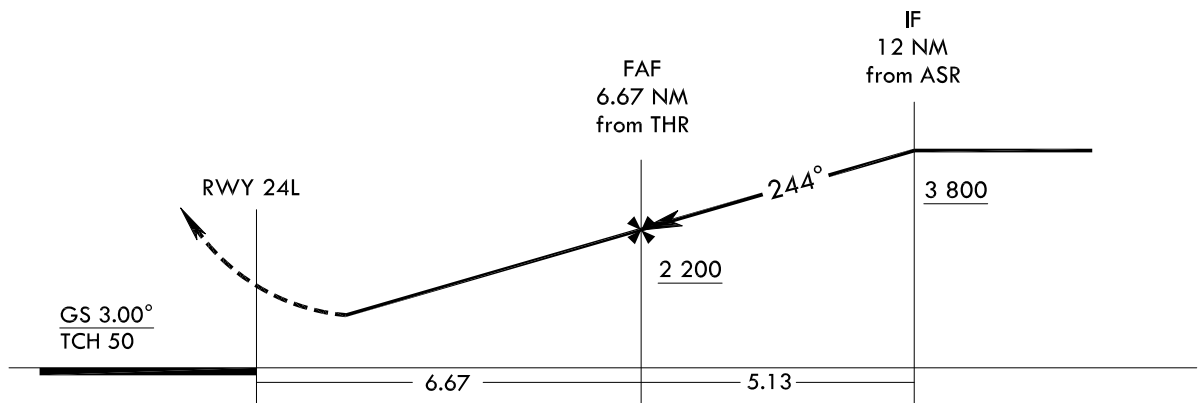


NOT TO SCALE

MISSED APPROACH

Climb HDG 244° to 1 600 ft and turn left HDG 220° to 4 500 ft, then expect radar vector by ATC.

TRANSITION ALT 14 000
TRANSITION LVL FL 140



CATEGORY	A	B	C	D	E
S-PAR 24L	527-1 3/4		503(600-1 3/4)		

Change : New procedure.

INTENTIONALLY

LEFT

BLANK

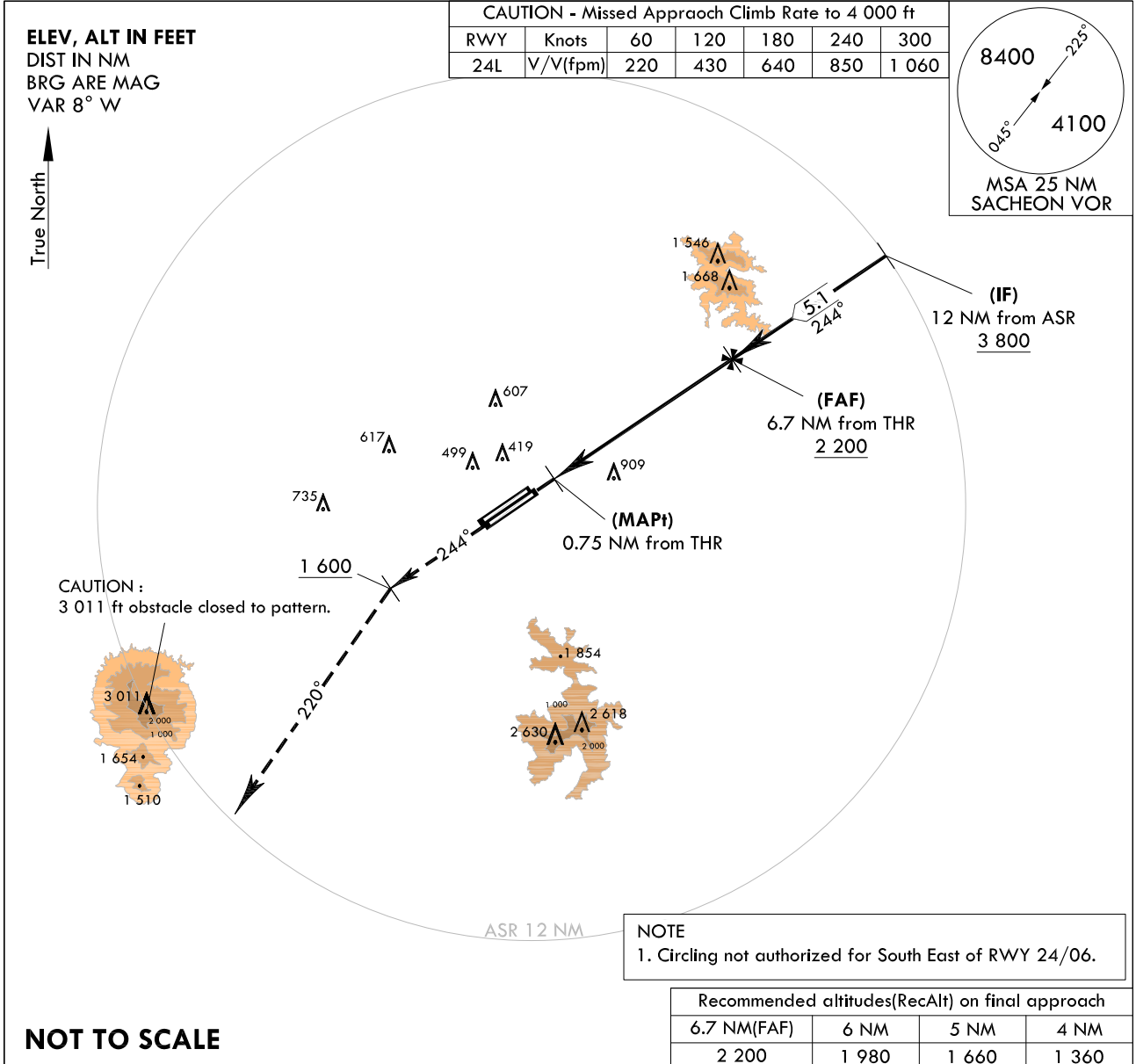
**INSTRUMENT
APPROACH
CHART**

AERODROME ELEV 25 ft
HEIGHTS RELATED TO
THR RWY 24L - ELEV 24 ft
HIGHEST ELEV TDZ 24 ft

SACHEON APP 135.4 344.7
SACHEON TWR 118.675 236.6
305.4

**SACHEON/Sacheon(RKPS)
ASR
RWY 24L**

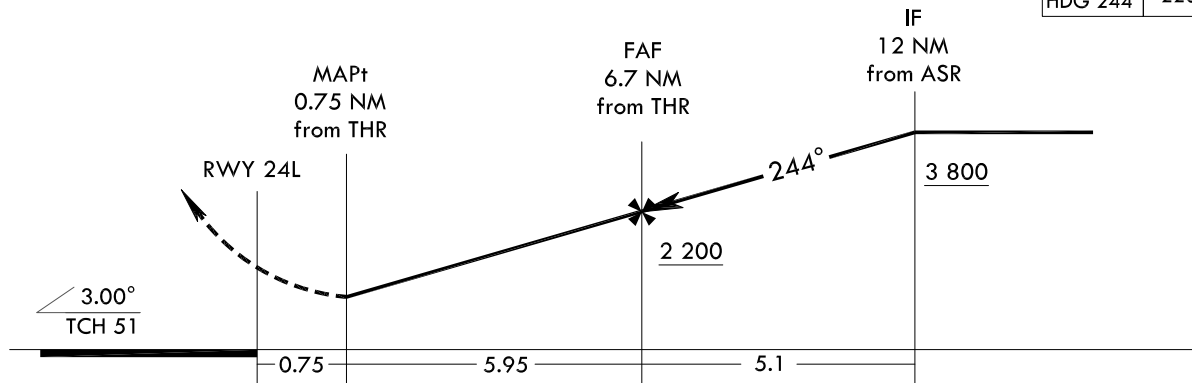
Note : Approach and circle to land under U.S. TERPS.



MISSED APPROACH

Climb HDG 244° to 1 600 ft, then turn left HDG 220° to 4 500 ft, then expect radar vector by ATC.

TRANSITION ALT 14 000
TRANSITION LVL FL 140



CATEGORY	A	B	C	D	E
S-ASR 24L	1 240/55 1 216(1 300-1)	1 240/60 1 216(1 300-1 1/4)	1 240-3	1 216(1 300-3)	
C CIRCLING	1 240-1 1/4 1 215(1 300-1 1/4)	1 240-1 1/2 1 215(1 300-1 1/2)	1 240-3	1 215(1 300-3)	

Change : New procedure.

INTENTIONALLY

LEFT

BLANK